

COLUMBIA ROAD Washington, DC 20009



PROJECT FACTS

GLA: 5,500 SF

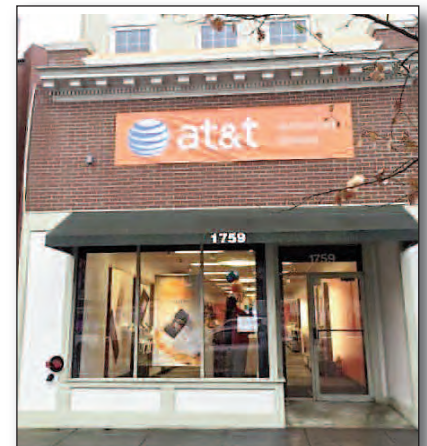
- ▶ Shops are adjacent to Safeway & CVS/pharmacy
- ▶ Located in Adams Morgan, the area is undergoing a rapid rebirth with several 'big box' stores opening in the neighborhood
- ▶ Less than 2 blocks from these retailers is the major conversion project of a century-old church to a trendy hotel named *The Line DC*. The hotel opened its doors in late December 2017.



2018 DEMOGRAPHICS

	Population	Avg HH Income	Households
1 mile	95,684	\$137,272	49,479
3 mile	399,171	\$133,612	182,181
5 mile	779,161	\$136,913	360,030

2018 ESRI



COLUMBIA ROAD Washington, DC 20009

COLUMBIA ROAD Washington, DC 20009



PROJECT FACTS

GLA: 5,500 SF

- ▶ Shops are adjacent to Safeway & CVS/pharmacy
- ▶ Located in Adams Morgan, the area is undergoing a rapid rebirth with several 'big box' stores opening in the neighborhood
- ▶ Less than 2 blocks from these retailers is the major conversion project of a century-old church to a trendy hotel named *The Line DC*. The hotel opened its doors in late December 2017.



2018 DEMOGRAPHICS

	Population	Avg HH Income	Households
1 mile	95,684	\$137,272	49,479
3 mile	399,171	\$133,612	182,181
5 mile	779,161	\$136,913	360,030



LEASING CONTACT

Andrew Iszard | 202.736.2827 | AndrewIszard@combined.biz