

THE COMMONS AT LA VERNE

La Verne, CA 91750



PROJECT FACTS

GLA: 125,000 SF

- ▶ Beautiful shopping center located on the world famous Route 66
- ▶ The center features a 51,000 SF Vons grocery store, 30,000 SF Ross Dress for Less, Unleashed by Petco and many more national and regional tenants
- ▶ Less than 2 miles from the University of La Verne with over 8,300 students

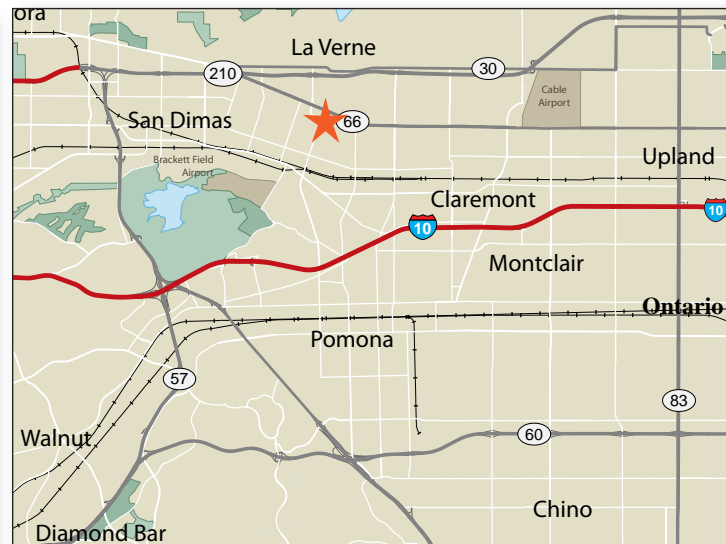
FEATURED TENANTS

Vons, Ross Dress for Less, Unleashed by Petco, The Habit, Jamba Juice, Supercuts, Baskin Robbins, Verizon, Wahflles Desserts & Cafe, Flame Broiler

2018 DEMOGRAPHICS

	Population	Avg HH Income	Households
1 mile	15,854	\$ 99,960	5,841
3 mile	91,478	\$107,344	32,187
5 mile	274,559	\$ 97,775	83,716

2018 ESRI

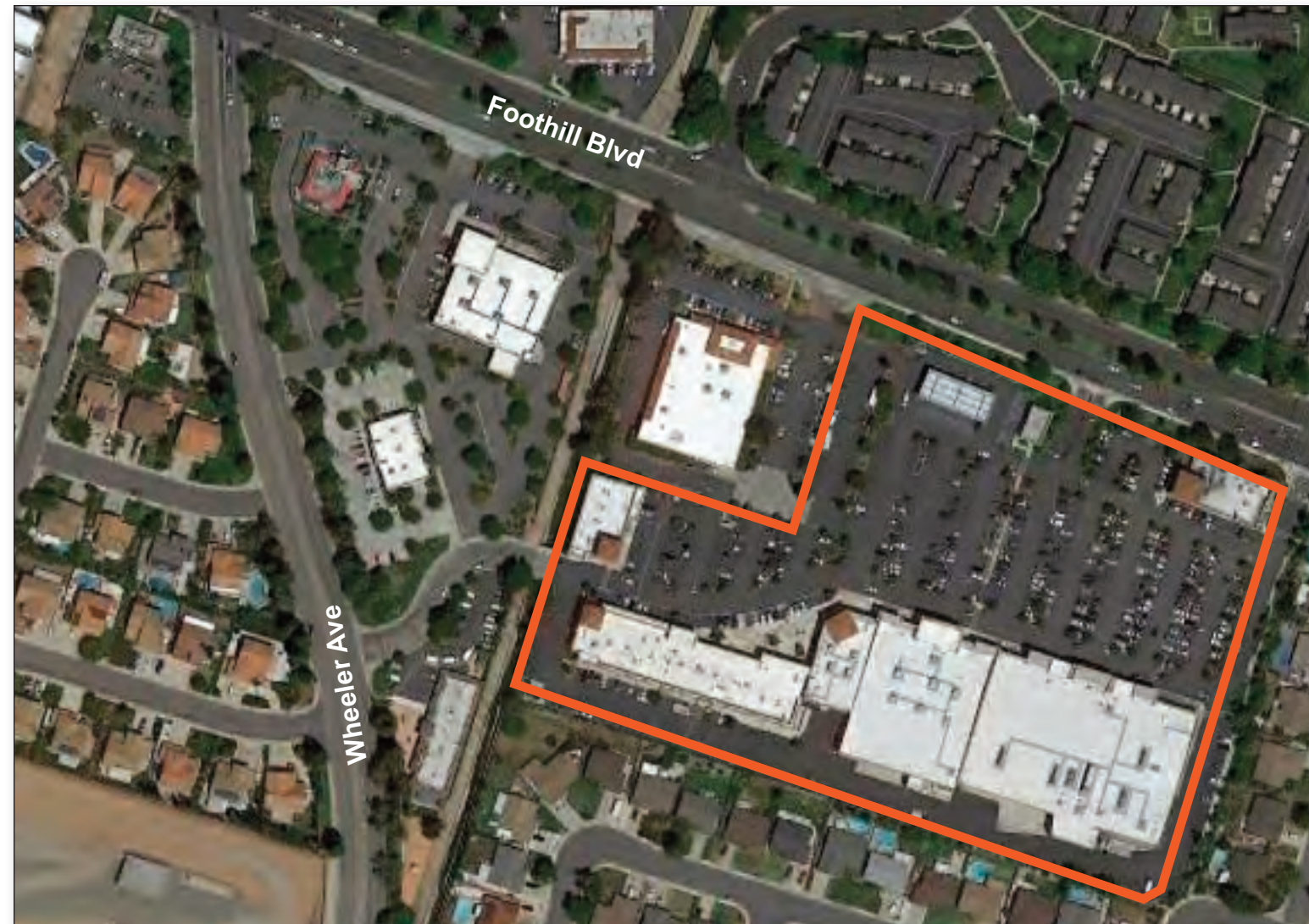


LOCATION

SE corner of Foothill Boulevard & Wheeler Avenue

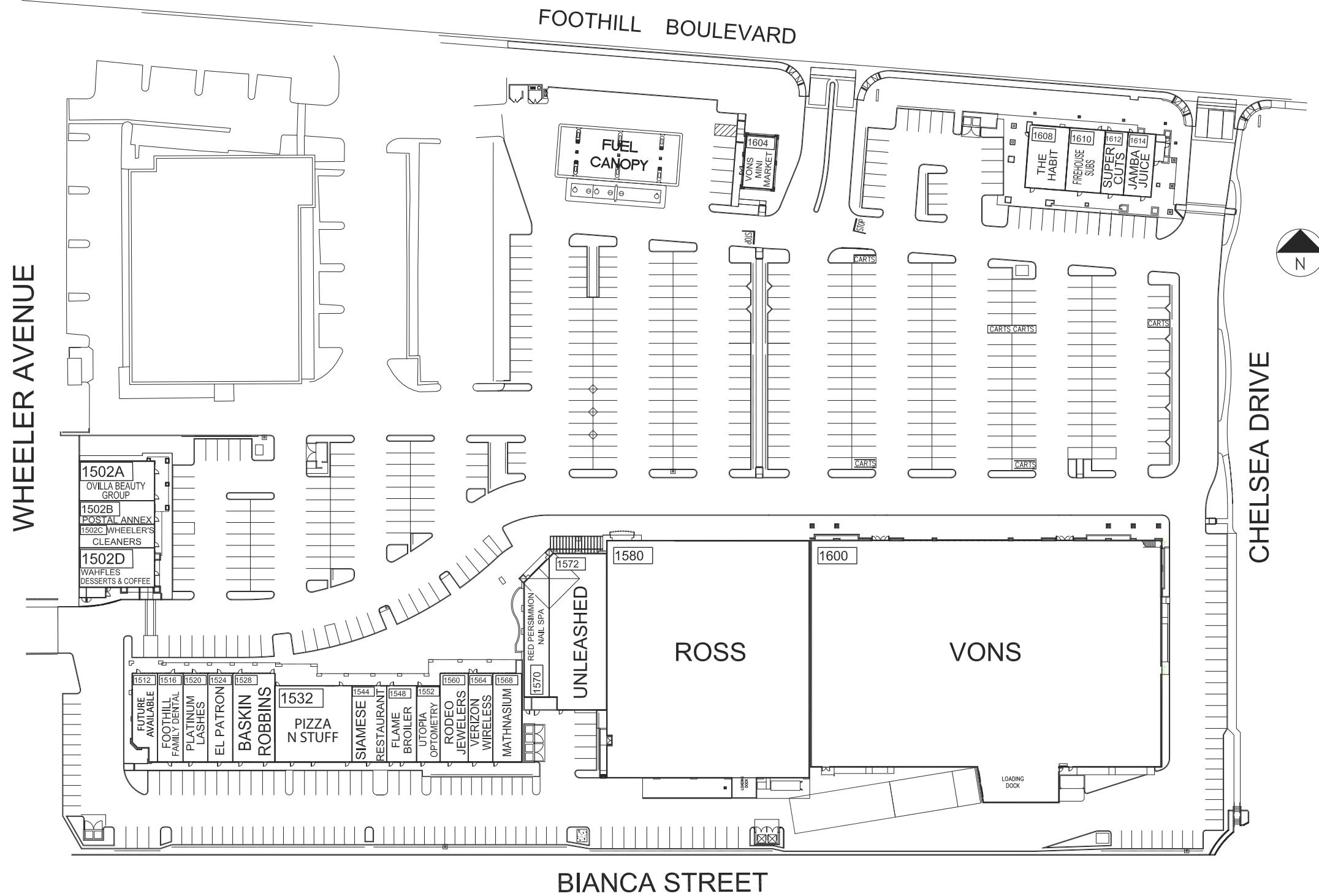
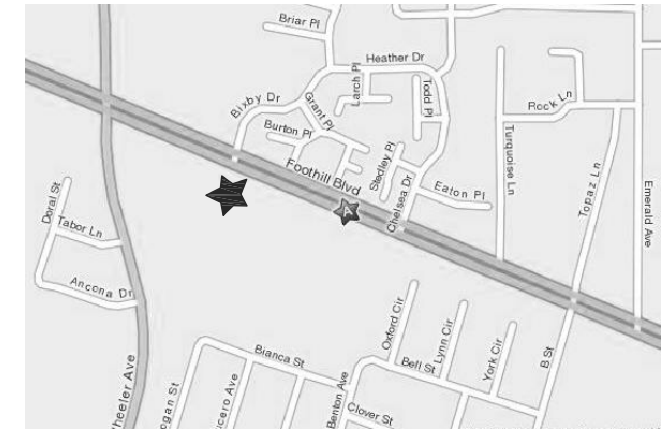
LEASING CONTACT

Jacey Siller | 310.228.2963 | JSiller@combined.biz
 CABRE ID 02023263



COMMONS AT LA VERNE

SEC FOOTHILL BOULEVARD & WHEELER AVENUE, LA VERNE, CALIFORNIA



TENANT ROSTER

1502A OVILLA BEAUTY GROUP	2,000 SF	1560 RODEO JEWELERS	1,393 SF
1502B POSTAL ANNEX	1,000 SF	1564 VERIZON WIRELESS	1,453 SF
1502C WHEELER'S CLEANERS	1,000 SF	1568 MATHNASIUM	1,626 SF
1502D WAHFILES DESSERTS & COFFEE	2,000 SF	1570 RED PERSIMMON NAIL & SPA	938 SF
1512 FUTURE AVAILABLE	2,513 SF	1572 UNLEASHED	6,625 SF
1516 FOOTHILL FAMILY DENTAL	1,388 SF	1580 ROSS	30,187 SF
1520 PLATINUM LASHES	1,306 SF	1600 VONS	51,053 SF
1524 EL PATRON MEXICAN RESTAURANT	1,452 SF	1604 VONS MINI MART	850 SF
1528 BASKIN ROBBINS	1,165 SF	1608 THE HABIT	1,600 SF
1532 PIZZA N STUFF	3,364 SF	1610 FIREHOUSE SUBS	1,300 SF
1544 SIAMESE RESTAURANT	1,825 SF	1612 SUPERCUTS	900 SF
1548 FLAME BROILER	1,249 SF	1614 JAMBA JUICE	1,200 SF
1552 UTOPIA OPTOMETRY	1,333 SF		

PARKING PROVIDED =	
PARKING REQUIRED =	
GLA AS PER RENT ROLL =	129,721 SF
ZONED =	C-6
REV. DATE =	03.21.18
PLOT DATE =	03.21.18

COMMONS AT LA VERNE

1600 FOOTHILL BLVD.
LA VERNE, CALIFORNIA 91750



COMBINED PROPERTIES INCORPORATED

9320 Wilshire Boulevard
Suite 310
Beverly Hills, CA 90212
(310) 205-9616
FAX (310) 228-2160

THE SHOPPING CENTER LAYOUT SHOWN IS PRELIMINARY AND SUBJECT TO MODIFICATION AND REVISION. NO REPRESENTATION IS MADE AS TO OCCUPANCY, TYPES OF BUSINESS OR TENANT SHOWN ON SAME. THIS DRAWING IS ALSO SUBJECT TO CHANGE, REVIEW AND APPROVAL OF ALL GOVERNMENTAL AUTHORITIES. ADDITIONAL BUILDINGS OR STRUCTURES MAY BE BUILT OR ADDED AND EXISTING BUILDINGS OR STRUCTURES MAY BE REMOVED, DELETED OR OTHERWISE MODIFIED AND THE LANDSCAPING AND PARKING LAYOUT IS SUBJECT TO CHANGE.

50' 100'
APPROX. SCALE

LEASING PLAN