

COLUMBIA ROAD

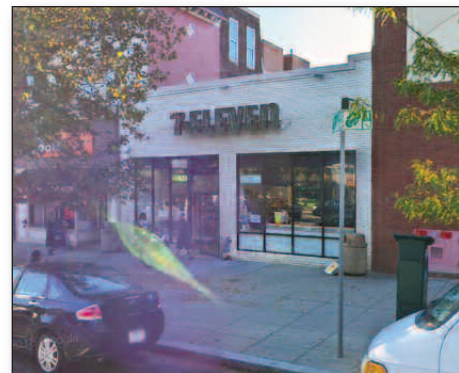
Washington, DC 20009



PROJECT FACTS

GLA: 5,500 SF

- ▶ Shops are adjacent to Safeway & CVS/pharmacy
- ▶ Located in Adams Morgan, the area is undergoing a rapid rebirth with several 'big box' stores opening in the neighborhood
- ▶ Less than 2 blocks from these retailers is the major conversion project of a century-old church to a trendy hotel named *The Line DC*.



2021 DEMOGRAPHICS

	Population	Avg HH Income	Households
1 mile	97,346	\$160,919	49,614
3 mile	398,265	\$158,433	184,514
5 mile	797,951	\$157,895	366,974

2021 ESRI



