



Demographic and Income Profile

Chantilly Plaza
13619 Lee Jackson Memorial Hwy, Chantilly, Virginia, 20151
Ring: 1 mile radius

Prepared by Esri
Latitude: 38.88866
Longitude: -77.41797

Summary	Census 2010	Census 2020	2022	2027
Population	16,855	17,542	17,387	16,999
Households	5,539	5,724	5,661	5,512
Families	4,364	-	4,443	4,320
Average Household Size	3.04	3.05	3.06	3.07
Owner Occupied Housing Units	4,082	-	4,254	4,207
Renter Occupied Housing Units	1,456	-	1,407	1,305
Median Age	34.7	-	36.9	38.4

Trends: 2022-2027 Annual Rate	Area	State	National
Population	-0.45%	0.26%	0.25%
Households	-0.53%	0.29%	0.31%
Families	-0.56%	0.22%	0.28%
Owner HHs	-0.22%	0.51%	0.53%
Median Household Income	3.89%	2.72%	3.12%

Households by Income	2022		2027	
	Number	Percent	Number	Percent
<\$15,000	117	2.1%	90	1.6%
\$15,000 - \$24,999	138	2.4%	102	1.9%
\$25,000 - \$34,999	148	2.6%	116	2.1%
\$35,000 - \$49,999	438	7.7%	369	6.7%
\$50,000 - \$74,999	747	13.2%	593	10.8%
\$75,000 - \$99,999	525	9.3%	355	6.4%
\$100,000 - \$149,999	1,157	20.4%	1,058	19.2%
\$150,000 - \$199,999	804	14.2%	993	18.0%
\$200,000+	1,587	28.0%	1,836	33.3%

Median Household Income	\$126,126	\$152,632
Average Household Income	\$170,634	\$196,389
Per Capita Income	\$54,687	\$62,663

Population by Age	Census 2010		2022		2027	
	Number	Percent	Number	Percent	Number	Percent
0 - 4	1,269	7.5%	1,149	6.6%	1,124	6.6%
5 - 9	1,200	7.1%	1,233	7.1%	1,121	6.6%
10 - 14	1,281	7.6%	1,302	7.5%	1,177	6.9%
15 - 19	1,180	7.0%	1,047	6.0%	1,049	6.2%
20 - 24	991	5.9%	896	5.2%	756	4.4%
25 - 34	2,598	15.4%	2,469	14.2%	2,287	13.5%
35 - 44	2,742	16.3%	2,857	16.4%	2,934	17.3%
45 - 54	2,726	16.2%	2,336	13.4%	2,313	13.6%
55 - 64	1,809	10.7%	2,155	12.4%	1,943	11.4%
65 - 74	728	4.3%	1,295	7.4%	1,450	8.5%
75 - 84	260	1.5%	516	3.0%	674	4.0%
85+	72	0.4%	131	0.8%	172	1.0%

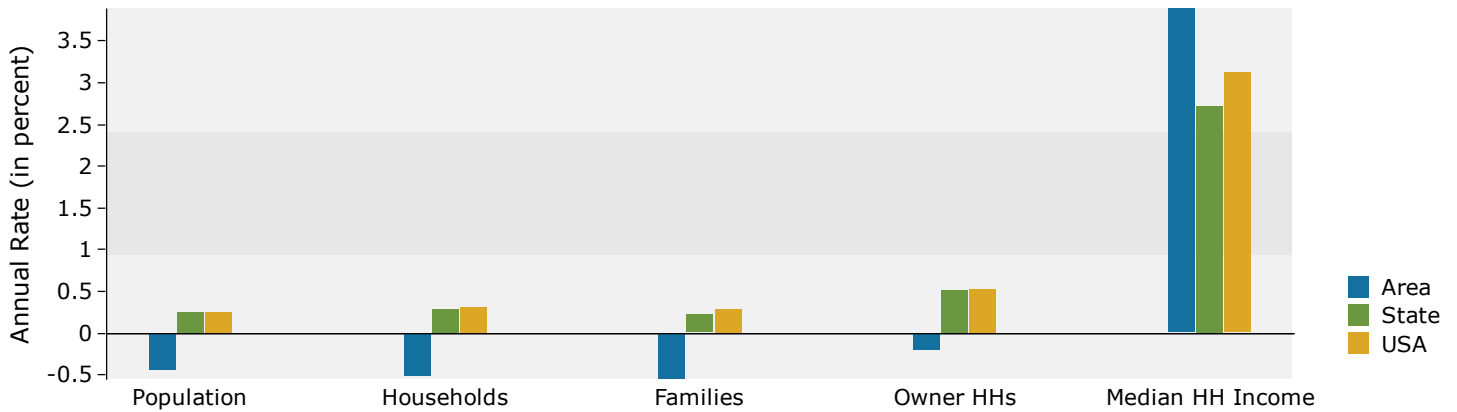
Race and Ethnicity	Census 2010		Census 2020		2022		2027	
	Number	Percent	Number	Percent	Number	Percent	Number	Percent
White Alone	9,121	54.1%	6,697	38.2%	6,511	37.4%	6,019	35.4%
Black Alone	1,236	7.3%	1,147	6.5%	1,139	6.6%	1,108	6.5%
American Indian Alone	45	0.3%	81	0.5%	84	0.5%	90	0.5%
Asian Alone	4,563	27.1%	6,228	35.5%	6,228	35.8%	6,269	36.9%
Pacific Islander Alone	11	0.1%	2	0.0%	2	0.0%	2	0.0%
Some Other Race Alone	1,118	6.6%	1,485	8.5%	1,498	8.6%	1,537	9.0%
Two or More Races	760	4.5%	1,902	10.8%	1,925	11.1%	1,974	11.6%
Hispanic Origin (Any Race)	2,917	17.3%	3,208	18.3%	3,202	18.4%	3,164	18.6%

Data Note: Income is expressed in current dollars.

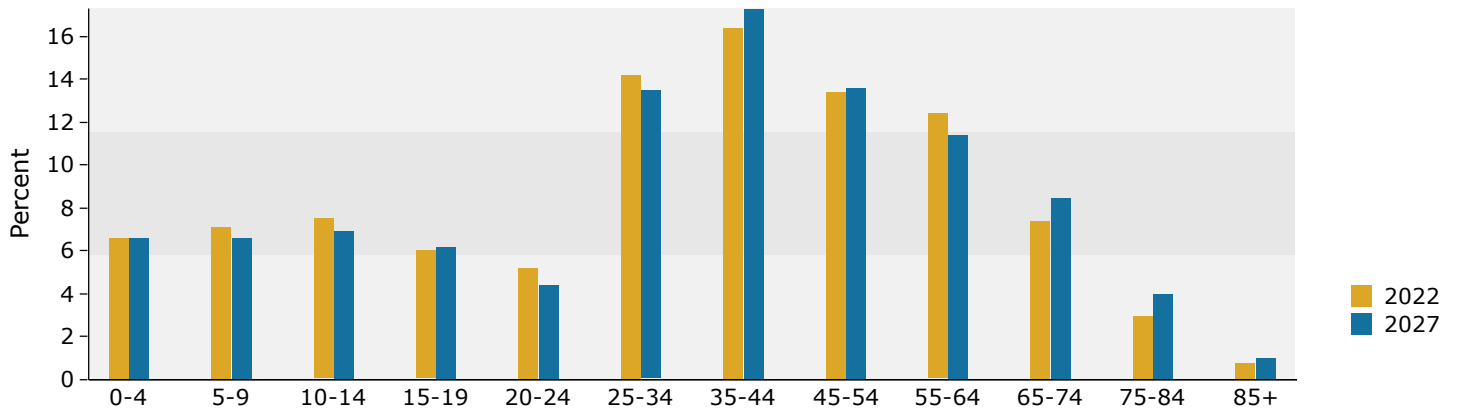
Source: Esri forecasts for 2022 and 2027. U.S. Census Bureau 2010 decennial Census data converted by Esri into 2020 geography.

March 06, 2023

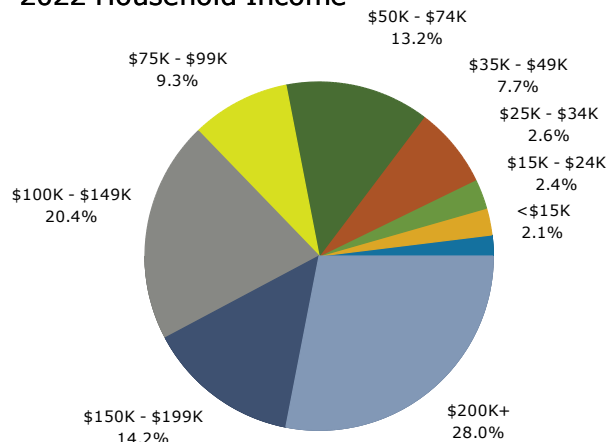
Trends 2022-2027



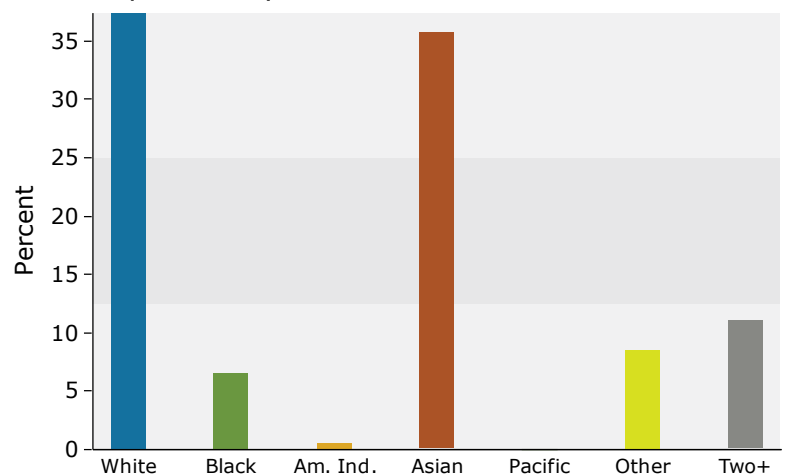
Population by Age



2022 Household Income



2022 Population by Race



2022 Percent Hispanic Origin: 18.4%



Demographic and Income Profile

Chantilly Plaza
13619 Lee Jackson Memorial Hwy, Chantilly, Virginia, 20151
Ring: 3 mile radius

Prepared by Esri
Latitude: 38.88866
Longitude: -77.41797

Summary	Census 2010	Census 2020	2022	2027
Population	82,653	88,013	89,758	89,402
Households	28,499	30,023	30,563	30,368
Families	21,797	-	23,444	23,231
Average Household Size	2.90	2.92	2.92	2.93
Owner Occupied Housing Units	22,307	-	23,530	23,539
Renter Occupied Housing Units	6,192	-	7,033	6,830
Median Age	37.0	-	39.2	40.4

Trends: 2022-2027 Annual Rate	Area	State	National
Population	-0.08%	0.26%	0.25%
Households	-0.13%	0.29%	0.31%
Families	-0.18%	0.22%	0.28%
Owner HHs	0.01%	0.51%	0.53%
Median Household Income	2.53%	2.72%	3.12%

Households by Income	2022		2027	
	Number	Percent	Number	Percent
<\$15,000	657	2.1%	461	1.5%
\$15,000 - \$24,999	542	1.8%	388	1.3%
\$25,000 - \$34,999	536	1.8%	383	1.3%
\$35,000 - \$49,999	1,273	4.2%	999	3.3%
\$50,000 - \$74,999	2,780	9.1%	2,283	7.5%
\$75,000 - \$99,999	2,792	9.1%	2,354	7.8%
\$100,000 - \$149,999	5,682	18.6%	4,789	15.8%
\$150,000 - \$199,999	4,956	16.2%	5,411	17.8%
\$200,000+	11,344	37.1%	13,300	43.8%

Median Household Income	\$157,885	\$178,871
Average Household Income	\$209,455	\$239,515
Per Capita Income	\$71,239	\$81,351

Population by Age	Census 2010		2022		2027	
	Number	Percent	Number	Percent	Number	Percent
0 - 4	5,366	6.5%	4,970	5.5%	4,988	5.6%
5 - 9	6,126	7.4%	5,837	6.5%	5,500	6.2%
10 - 14	6,561	7.9%	6,733	7.5%	5,893	6.6%
15 - 19	5,751	7.0%	5,991	6.7%	5,601	6.3%
20 - 24	4,222	5.1%	4,667	5.2%	4,314	4.8%
25 - 34	10,851	13.1%	11,090	12.4%	11,188	12.5%
35 - 44	13,177	15.9%	13,039	14.5%	13,514	15.1%
45 - 54	15,025	18.2%	13,314	14.8%	12,637	14.1%
55 - 64	9,735	11.8%	12,753	14.2%	11,952	13.4%
65 - 74	3,811	4.6%	7,597	8.5%	8,754	9.8%
75 - 84	1,499	1.8%	2,884	3.2%	4,014	4.5%
85+	527	0.6%	882	1.0%	1,047	1.2%

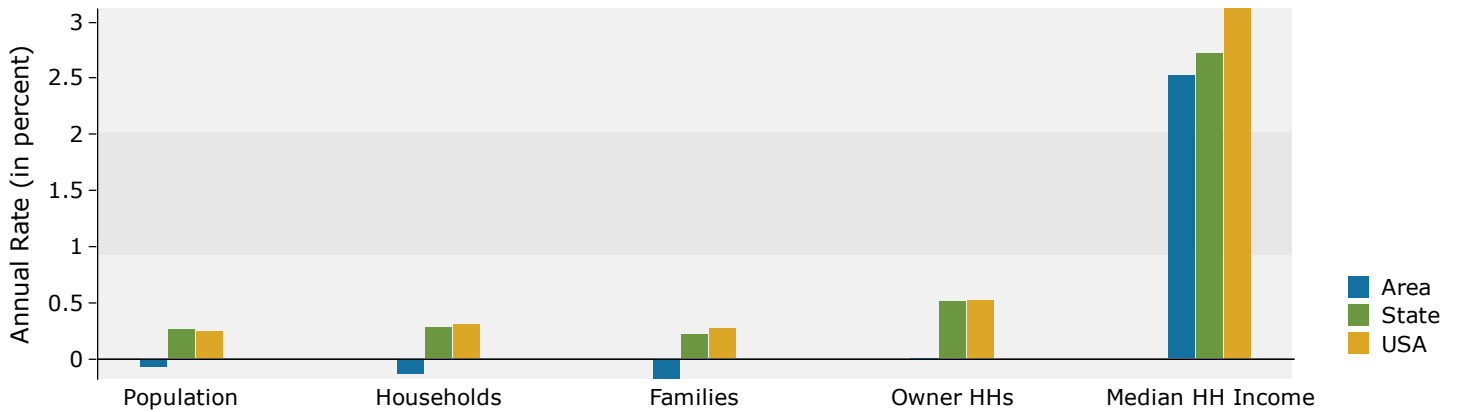
Race and Ethnicity	Census 2010		Census 2020		2022		2027	
	Number	Percent	Number	Percent	Number	Percent	Number	Percent
White Alone	52,498	63.5%	41,732	47.4%	42,008	46.8%	40,000	44.7%
Black Alone	4,615	5.6%	5,204	5.9%	5,431	6.1%	5,468	6.1%
American Indian Alone	156	0.2%	288	0.3%	302	0.3%	325	0.4%
Asian Alone	19,542	23.6%	28,343	32.2%	29,018	32.3%	29,895	33.4%
Pacific Islander Alone	62	0.1%	30	0.0%	33	0.0%	34	0.0%
Some Other Race Alone	2,773	3.4%	4,213	4.8%	4,416	4.9%	4,631	5.2%
Two or More Races	3,008	3.6%	8,202	9.3%	8,550	9.5%	9,049	10.1%
Hispanic Origin (Any Race)	8,008	9.7%	9,944	11.3%	10,303	11.5%	10,389	11.6%

Data Note: Income is expressed in current dollars.

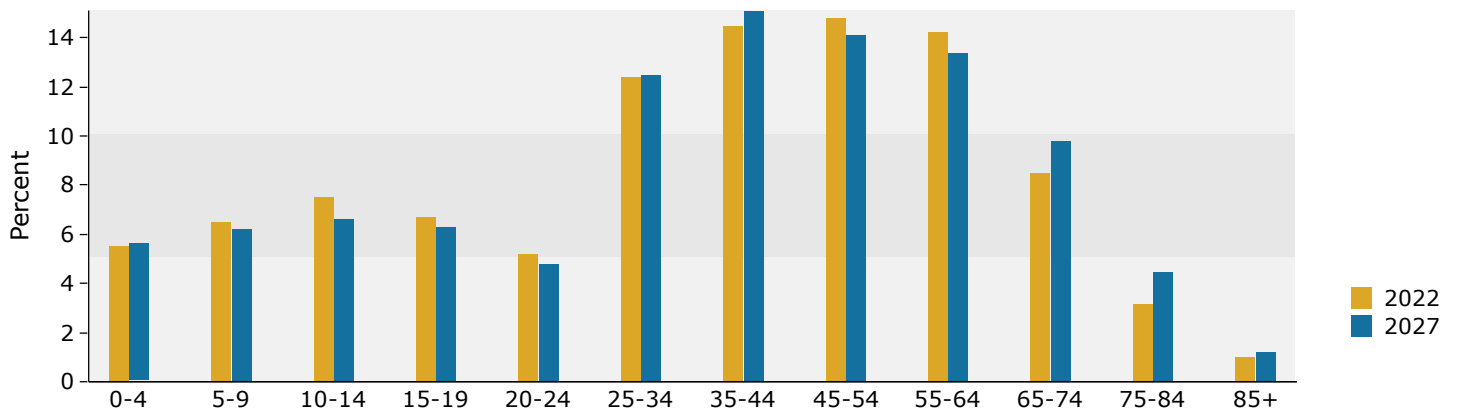
Source: Esri forecasts for 2022 and 2027. U.S. Census Bureau 2010 decennial Census data converted by Esri into 2020 geography.

March 06, 2023

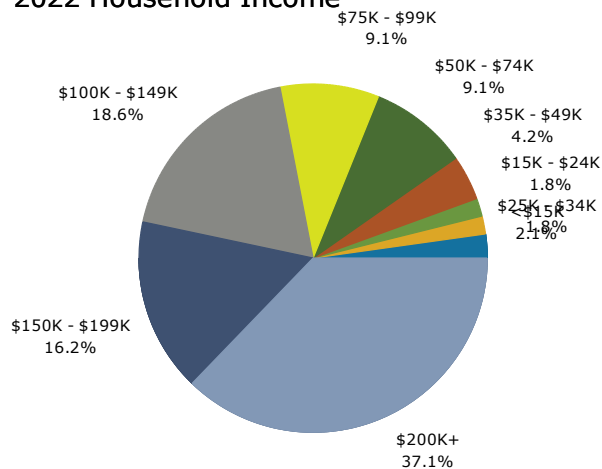
Trends 2022-2027



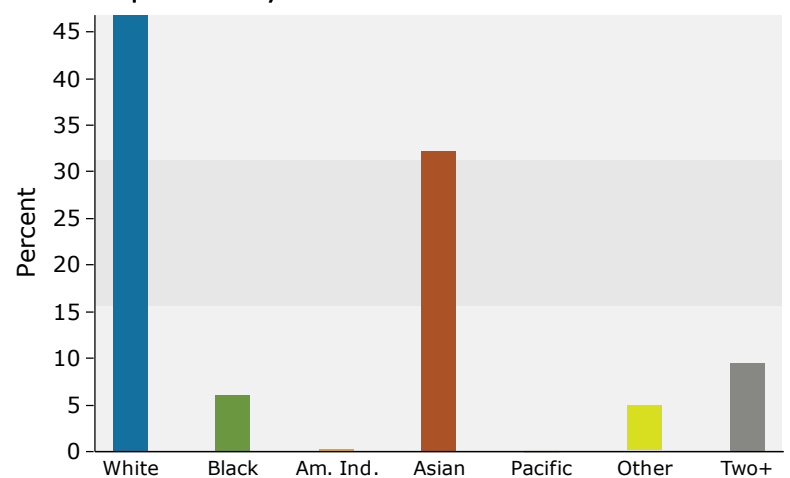
Population by Age



2022 Household Income



2022 Population by Race



2022 Percent Hispanic Origin: 11.5%



Demographic and Income Profile

Chantilly Plaza
13619 Lee Jackson Memorial Hwy, Chantilly, Virginia, 20151
Ring: 5 mile radius

Prepared by Esri
Latitude: 38.88866
Longitude: -77.41797

Summary	Census 2010	Census 2020	2022	2027
Population	234,191	252,537	256,843	257,408
Households	84,462	90,514	91,767	91,738
Families	60,394	-	65,027	64,800
Average Household Size	2.77	2.78	2.79	2.80
Owner Occupied Housing Units	58,162	-	59,789	60,092
Renter Occupied Housing Units	26,300	-	31,978	31,646
Median Age	34.6	-	37.0	37.6

Trends: 2022-2027 Annual Rate	Area	State	National
Population	0.04%	0.26%	0.25%
Households	-0.01%	0.29%	0.31%
Families	-0.07%	0.22%	0.28%
Owner HHs	0.10%	0.51%	0.53%
Median Household Income	2.60%	2.72%	3.12%

Households by Income	2022		2027	
	Number	Percent	Number	Percent
<\$15,000	2,295	2.5%	1,634	1.8%
\$15,000 - \$24,999	1,908	2.1%	1,379	1.5%
\$25,000 - \$34,999	2,086	2.3%	1,567	1.7%
\$35,000 - \$49,999	4,722	5.1%	3,686	4.0%
\$50,000 - \$74,999	8,689	9.5%	7,202	7.9%
\$75,000 - \$99,999	10,287	11.2%	9,058	9.9%
\$100,000 - \$149,999	18,636	20.3%	17,078	18.6%
\$150,000 - \$199,999	15,139	16.5%	17,651	19.2%
\$200,000+	28,005	30.5%	32,483	35.4%

Median Household Income	\$139,926	\$159,106
Average Household Income	\$188,202	\$213,406
Per Capita Income	\$67,134	\$75,942

Population by Age	Census 2010		2022		2027	
	Number	Percent	Number	Percent	Number	Percent
0 - 4	17,135	7.3%	15,827	6.2%	16,112	6.3%
5 - 9	17,125	7.3%	17,267	6.7%	16,386	6.4%
10 - 14	16,881	7.2%	18,827	7.3%	16,632	6.5%
15 - 19	14,201	6.1%	15,693	6.1%	15,456	6.0%
20 - 24	13,084	5.6%	14,707	5.7%	14,114	5.5%
25 - 34	40,175	17.2%	37,704	14.7%	39,198	15.2%
35 - 44	39,278	16.8%	41,435	16.1%	41,067	16.0%
45 - 54	37,488	16.0%	35,965	14.0%	35,377	13.7%
55 - 64	24,148	10.3%	31,220	12.2%	29,573	11.5%
65 - 74	9,784	4.2%	19,011	7.4%	21,167	8.2%
75 - 84	3,668	1.6%	7,243	2.8%	9,934	3.9%
85+	1,225	0.5%	1,944	0.8%	2,393	0.9%

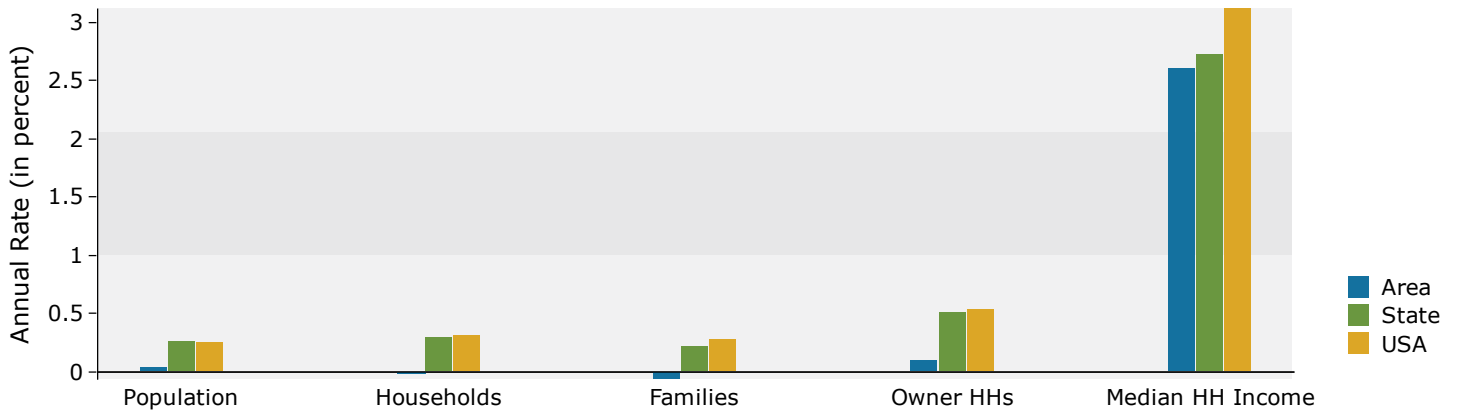
Race and Ethnicity	Census 2010		Census 2020		2022		2027	
	Number	Percent	Number	Percent	Number	Percent	Number	Percent
White Alone	139,245	59.5%	114,404	45.3%	114,569	44.6%	109,567	42.6%
Black Alone	17,618	7.5%	20,710	8.2%	21,216	8.3%	21,417	8.3%
American Indian Alone	607	0.3%	950	0.4%	980	0.4%	1,059	0.4%
Asian Alone	56,768	24.2%	75,776	30.0%	77,915	30.3%	80,487	31.3%
Pacific Islander Alone	176	0.1%	137	0.1%	140	0.1%	138	0.1%
Some Other Race Alone	10,359	4.4%	15,552	6.2%	16,032	6.2%	17,082	6.6%
Two or More Races	9,419	4.0%	25,008	9.9%	25,990	10.1%	27,658	10.7%
Hispanic Origin (Any Race)	27,646	11.8%	33,308	13.2%	34,080	13.3%	34,930	13.6%

Data Note: Income is expressed in current dollars.

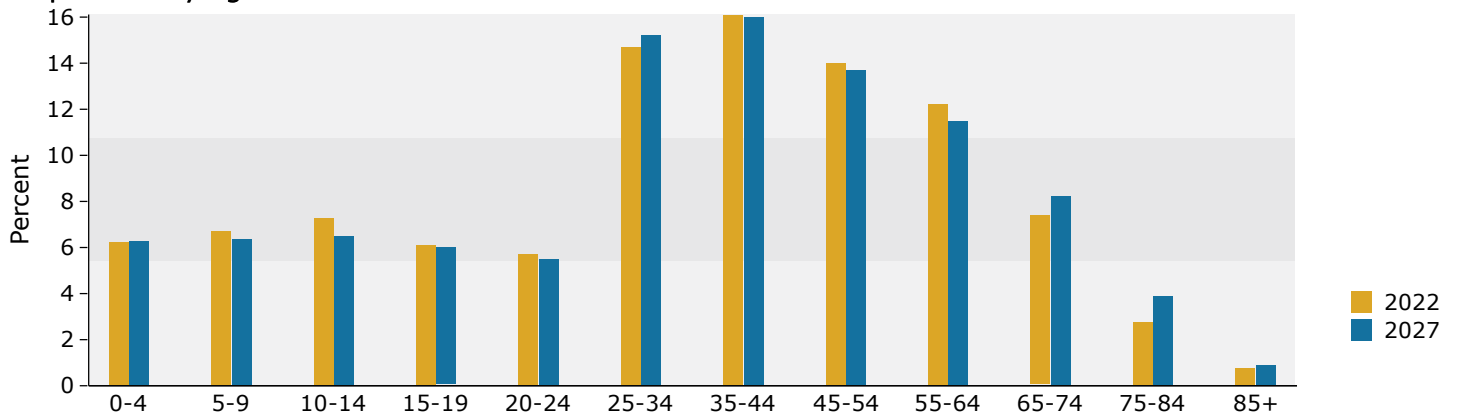
Source: Esri forecasts for 2022 and 2027. U.S. Census Bureau 2010 decennial Census data converted by Esri into 2020 geography.

March 06, 2023

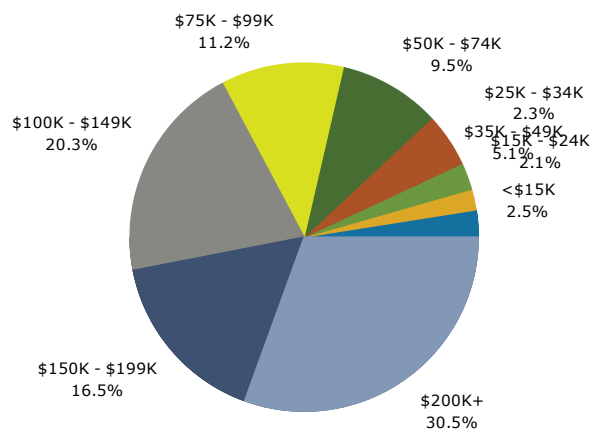
Trends 2022-2027



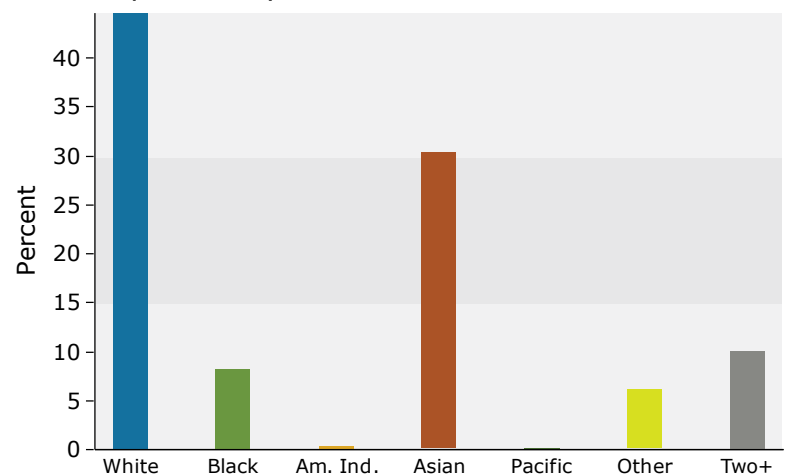
Population by Age



2022 Household Income



2022 Population by Race



2022 Percent Hispanic Origin: 13.3%