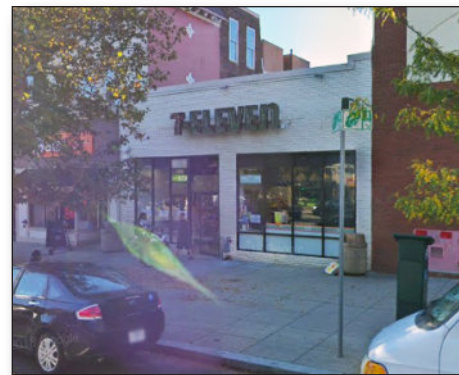




PROJECT FACTS

GLA: 5,500 SF

- ▶ Shops are adjacent to Safeway & CVS/pharmacy
- ▶ Located in Adams Morgan, the area is undergoing a rapid rebirth with several 'big box' stores opening in the neighborhood
- ▶ Less than 2 blocks from these retailers is the major conversion project of a century-old church to a trendy hotel named *The Line DC*.



2022 DEMOGRAPHICS

	Population	Avg HH Income	Households
1 mile	97,430	\$187,131	51,349
3 mile	395,149	\$181,064	188,566
5 mile	814,497	\$179,277	397,182

2023 ESRI



