



Demographic and Income Profile

Lee & Harrison Plaza
 5400 Lee Hwy, Arlington, Virginia, 22207
 Ring: 1 mile radius

Prepared by Esri
 Latitude: 38.89617
 Longitude: -77.13820

Summary	Census 2010	Census 2020	2022	2027
Population	20,337	22,413	22,388	21,778
Households	7,491	7,680	7,673	7,560
Families	5,140	-	5,227	5,150
Average Household Size	2.68	2.84	2.84	2.80
Owner Occupied Housing Units	5,778	-	5,970	5,963
Renter Occupied Housing Units	1,714	-	1,703	1,597
Median Age	38.6	-	39.4	41.0

Trends: 2022-2027 Annual Rate	Area	State	National
Population	-0.55%	0.26%	0.25%
Households	-0.30%	0.29%	0.31%
Families	-0.30%	0.22%	0.28%
Owner HHs	-0.02%	0.51%	0.53%
Median Household Income	0.00%	2.72%	3.12%

Households by Income	2022		2027	
	Number	Percent	Number	Percent
<\$15,000	198	2.6%	137	1.8%
\$15,000 - \$24,999	212	2.8%	150	2.0%
\$25,000 - \$34,999	156	2.0%	111	1.5%
\$35,000 - \$49,999	294	3.8%	207	2.7%
\$50,000 - \$74,999	507	6.6%	398	5.3%
\$75,000 - \$99,999	337	4.4%	325	4.3%
\$100,000 - \$149,999	873	11.4%	718	9.5%
\$150,000 - \$199,999	1,195	15.6%	1,204	15.9%
\$200,000+	3,900	50.8%	4,310	57.0%
Median Household Income	\$200,001		\$200,001	
Average Household Income	\$279,692		\$314,754	
Per Capita Income	\$95,770		\$109,156	

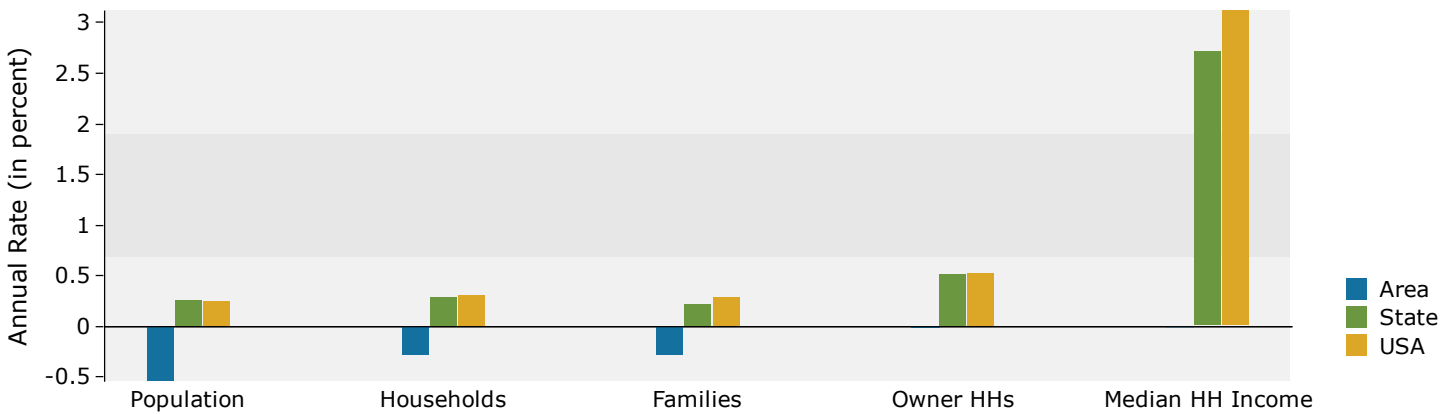
Population by Age	Census 2010		2022		2027	
	Number	Percent	Number	Percent	Number	Percent
0 - 4	1,552	7.6%	1,336	6.0%	1,319	6.1%
5 - 9	1,525	7.5%	1,601	7.2%	1,556	7.1%
10 - 14	1,305	6.4%	1,878	8.4%	1,617	7.4%
15 - 19	1,121	5.5%	1,645	7.3%	1,639	7.5%
20 - 24	1,039	5.1%	1,091	4.9%	1,047	4.8%
25 - 34	2,501	12.3%	2,187	9.8%	1,953	9.0%
35 - 44	3,251	16.0%	3,088	13.8%	3,208	14.7%
45 - 54	3,150	15.5%	3,065	13.7%	2,950	13.5%
55 - 64	2,629	12.9%	2,887	12.9%	2,726	12.5%
65 - 74	1,265	6.2%	2,195	9.8%	2,097	9.6%
75 - 84	641	3.2%	1,035	4.6%	1,277	5.9%
85+	360	1.8%	380	1.7%	389	1.8%

Race and Ethnicity	Census 2010		Census 2020		2022		2027	
	Number	Percent	Number	Percent	Number	Percent	Number	Percent
White Alone	16,883	83.0%	16,669	74.4%	16,523	73.8%	15,795	72.5%
Black Alone	1,056	5.2%	1,054	4.7%	1,051	4.7%	1,039	4.8%
American Indian Alone	56	0.3%	69	0.3%	72	0.3%	73	0.3%
Asian Alone	1,132	5.6%	1,478	6.6%	1,497	6.7%	1,531	7.0%
Pacific Islander Alone	7	0.0%	9	0.0%	9	0.0%	9	0.0%
Some Other Race Alone	571	2.8%	780	3.5%	813	3.6%	838	3.8%
Two or More Races	633	3.1%	2,354	10.5%	2,425	10.8%	2,493	11.4%
Hispanic Origin (Any Race)	1,765	8.7%	2,190	9.8%	2,208	9.9%	2,173	10.0%

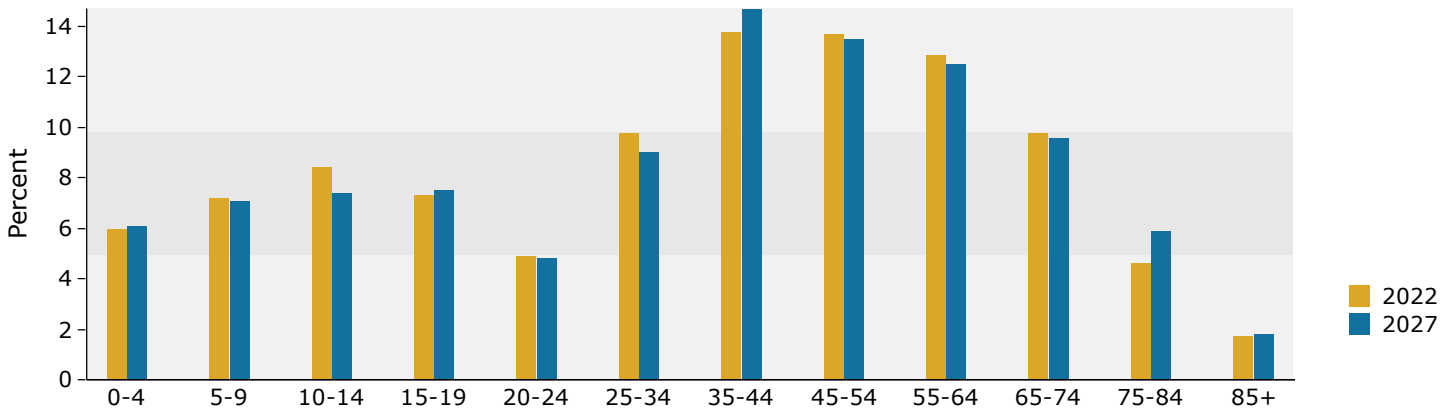
Data Note: Income is expressed in current dollars.

Source: Esri forecasts for 2022 and 2027. U.S. Census Bureau 2010 decennial Census data converted by Esri into 2020 geography.

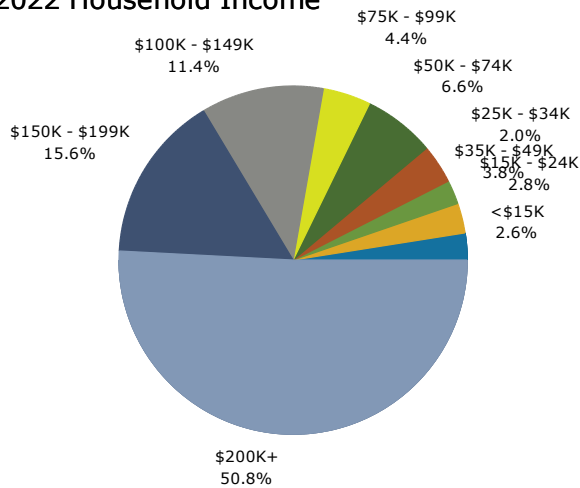
Trends 2022-2027



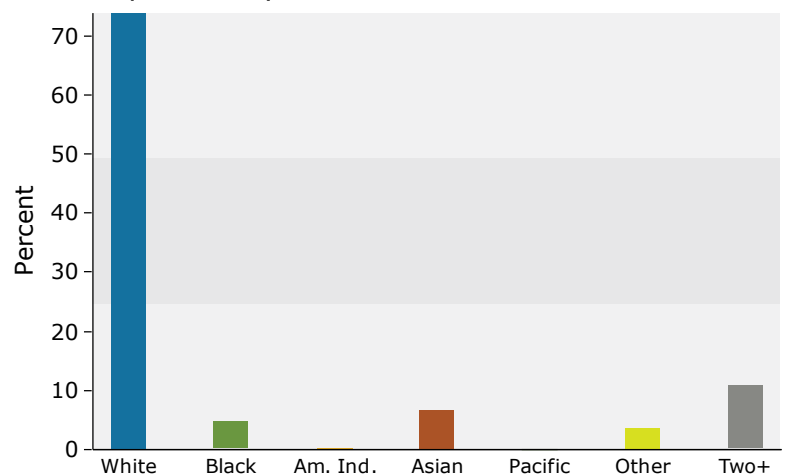
Population by Age



2022 Household Income



2022 Population by Race



2022 Percent Hispanic Origin: 9.9%

Source: Esri forecasts for 2022 and 2027. U.S. Census Bureau 2010 decennial Census data converted by Esri into 2020 geography.



Demographic and Income Profile

Lee & Harrison Plaza
 5400 Lee Hwy, Arlington, Virginia, 22207
 Ring: 3 mile radius

Prepared by Esri
 Latitude: 38.89617
 Longitude: -77.13820

Summary	Census 2010	Census 2020	2022	2027
Population	171,658	191,179	193,411	190,897
Households	71,201	76,304	77,203	76,896
Families	38,253	-	40,267	39,941
Average Household Size	2.38	2.47	2.47	2.44
Owner Occupied Housing Units	40,984	-	43,101	43,299
Renter Occupied Housing Units	30,215	-	34,103	33,597
Median Age	35.8	-	37.7	38.8

Trends: 2022-2027 Annual Rate	Area	State	National
Population	-0.26%	0.26%	0.25%
Households	-0.08%	0.29%	0.31%
Families	-0.16%	0.22%	0.28%
Owner HHs	0.09%	0.51%	0.53%
Median Household Income	1.96%	2.72%	3.12%

Households by Income	2022		2027	
	Number	Percent	Number	Percent
<\$15,000	3,512	4.5%	2,527	3.3%
\$15,000 - \$24,999	2,188	2.8%	1,630	2.1%
\$25,000 - \$34,999	2,183	2.8%	1,811	2.4%
\$35,000 - \$49,999	3,291	4.3%	2,861	3.7%
\$50,000 - \$74,999	6,991	9.1%	5,186	6.7%
\$75,000 - \$99,999	6,330	8.2%	5,194	6.8%
\$100,000 - \$149,999	12,752	16.5%	12,389	16.1%
\$150,000 - \$199,999	11,958	15.5%	14,253	18.5%
\$200,000+	27,998	36.3%	31,046	40.4%

Median Household Income	\$154,243	\$169,947
Average Household Income	\$219,005	\$246,044
Per Capita Income	\$87,948	\$99,720

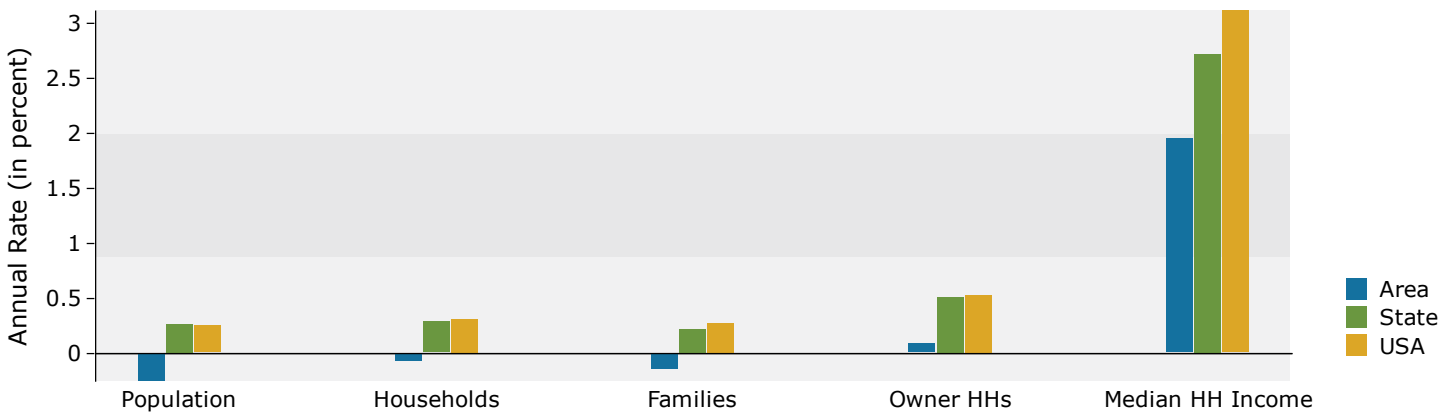
Population by Age	Census 2010		2022		2027	
	Number	Percent	Number	Percent	Number	Percent
0 - 4	10,942	6.4%	9,997	5.2%	10,031	5.3%
5 - 9	10,113	5.9%	10,755	5.6%	10,532	5.5%
10 - 14	8,662	5.0%	11,653	6.0%	10,346	5.4%
15 - 19	7,858	4.6%	10,656	5.5%	10,072	5.3%
20 - 24	11,615	6.8%	10,088	5.2%	10,797	5.7%
25 - 34	34,457	20.1%	34,672	17.9%	31,215	16.4%
35 - 44	26,113	15.2%	29,290	15.1%	31,319	16.4%
45 - 54	23,639	13.8%	23,678	12.2%	23,072	12.1%
55 - 64	19,504	11.4%	22,743	11.8%	21,269	11.1%
65 - 74	9,955	5.8%	17,571	9.1%	17,822	9.3%
75 - 84	5,485	3.2%	8,592	4.4%	10,566	5.5%
85+	3,316	1.9%	3,719	1.9%	3,857	2.0%

Race and Ethnicity	Census 2010		Census 2020		2022		2027	
	Number	Percent	Number	Percent	Number	Percent	Number	Percent
White Alone	130,090	75.8%	123,603	64.7%	124,245	64.2%	119,692	62.7%
Black Alone	7,769	4.5%	9,042	4.7%	9,149	4.7%	9,089	4.8%
American Indian Alone	801	0.5%	1,674	0.9%	1,734	0.9%	1,832	1.0%
Asian Alone	17,184	10.0%	22,186	11.6%	22,750	11.8%	23,480	12.3%
Pacific Islander Alone	89	0.1%	89	0.0%	89	0.0%	90	0.0%
Some Other Race Alone	9,357	5.5%	13,600	7.1%	13,774	7.1%	14,169	7.4%
Two or More Races	6,369	3.7%	20,986	11.0%	21,670	11.2%	22,546	11.8%
Hispanic Origin (Any Race)	24,698	14.4%	29,340	15.3%	29,556	15.3%	29,598	15.5%

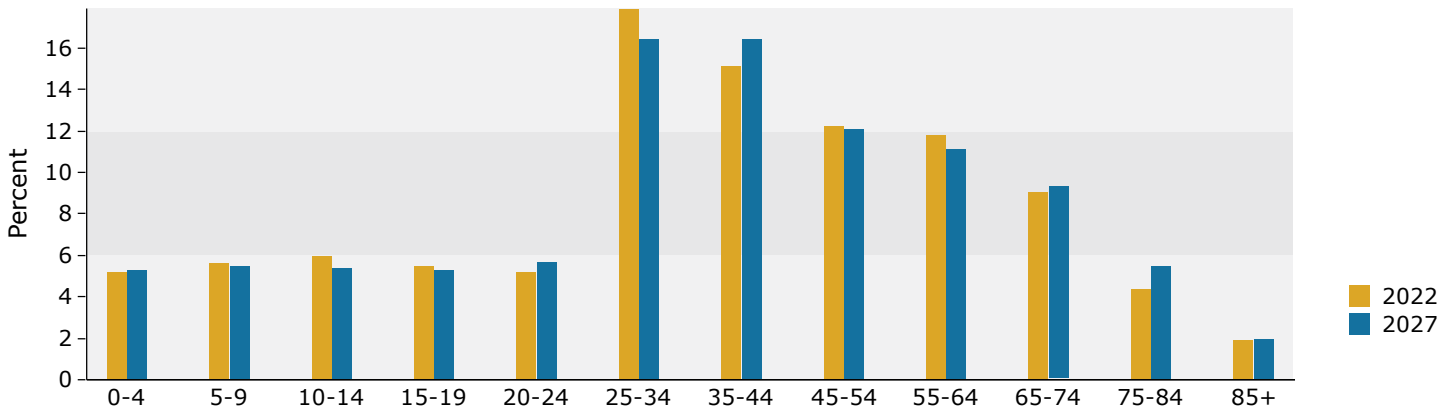
Data Note: Income is expressed in current dollars.

Source: Esri forecasts for 2022 and 2027. U.S. Census Bureau 2010 decennial Census data converted by Esri into 2020 geography.

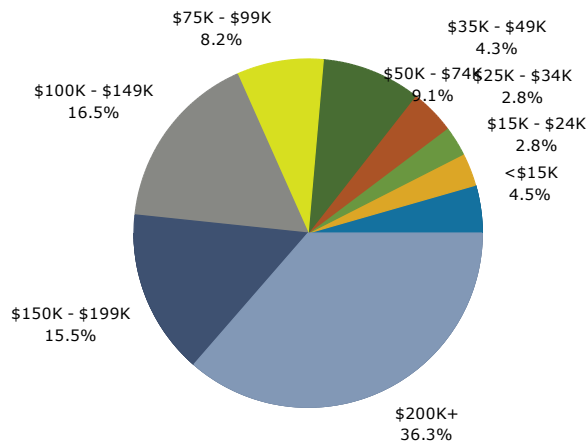
Trends 2022-2027



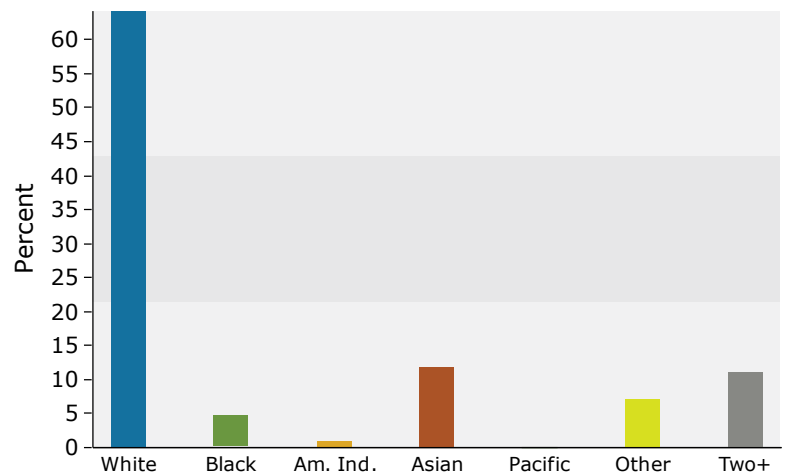
Population by Age



2022 Household Income



2022 Population by Race



2022 Percent Hispanic Origin: 15.3%



Demographic and Income Profile

Lee & Harrison Plaza
 5400 Lee Hwy, Arlington, Virginia, 22207
 Ring: 5 mile radius

Prepared by Esri
 Latitude: 38.89617
 Longitude: -77.13820

Summary	Census 2010	Census 2020	2022	2027
Population	497,005	545,586	553,729	551,049
Households	213,033	229,252	232,569	233,959
Families	105,203	-	111,314	111,141
Average Household Size	2.24	2.30	2.30	2.27
Owner Occupied Housing Units	108,922	-	115,947	117,611
Renter Occupied Housing Units	104,108	-	116,622	116,348
Median Age	34.6	-	36.9	37.9

Trends: 2022-2027 Annual Rate	Area	State	National
Population	-0.10%	0.26%	0.25%
Households	0.12%	0.29%	0.31%
Families	-0.03%	0.22%	0.28%
Owner HHs	0.29%	0.51%	0.53%
Median Household Income	3.20%	2.72%	3.12%

Households by Income	2022		2027	
	Number	Percent	Number	Percent
<\$15,000	11,576	5.0%	8,232	3.5%
\$15,000 - \$24,999	6,521	2.8%	4,786	2.0%
\$25,000 - \$34,999	7,401	3.2%	5,859	2.5%
\$35,000 - \$49,999	12,198	5.2%	9,728	4.2%
\$50,000 - \$74,999	26,085	11.2%	21,345	9.1%
\$75,000 - \$99,999	23,003	9.9%	20,905	8.9%
\$100,000 - \$149,999	40,263	17.3%	40,094	17.1%
\$150,000 - \$199,999	33,789	14.5%	40,844	17.5%
\$200,000+	71,727	30.8%	82,158	35.1%
Median Household Income	\$132,790		\$155,469	
Average Household Income	\$195,627		\$222,172	
Per Capita Income	\$82,568		\$94,724	

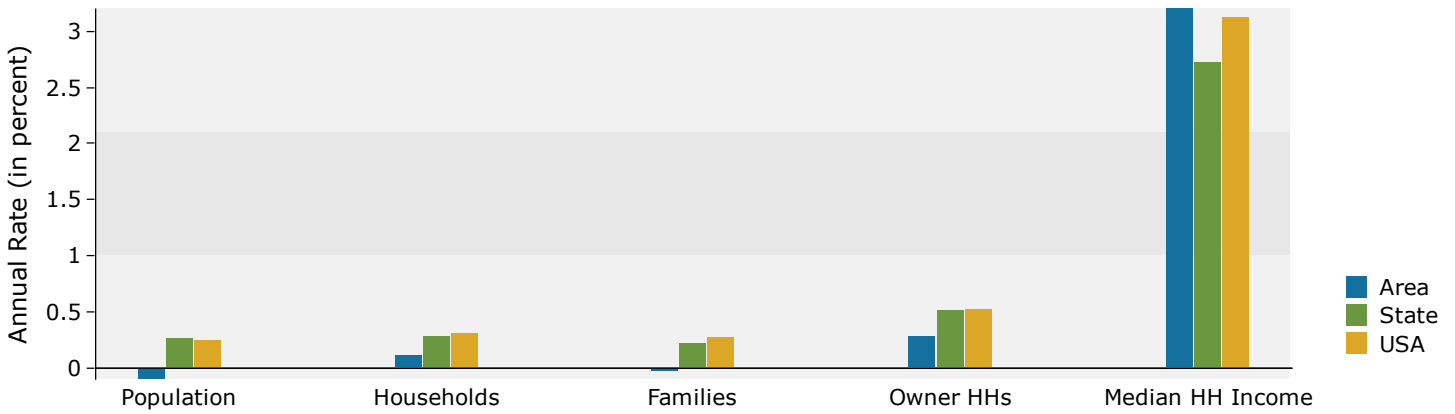
Population by Age	Census 2010		2022		2027	
	Number	Percent	Number	Percent	Number	Percent
0 - 4	29,734	6.0%	27,321	4.9%	27,365	5.0%
5 - 9	24,706	5.0%	27,264	4.9%	26,333	4.8%
10 - 14	20,999	4.2%	28,037	5.1%	25,354	4.6%
15 - 19	26,372	5.3%	32,459	5.9%	31,798	5.8%
20 - 24	44,943	9.0%	39,051	7.1%	41,155	7.5%
25 - 34	105,416	21.2%	104,193	18.8%	97,078	17.6%
35 - 44	73,711	14.8%	85,735	15.5%	88,260	16.0%
45 - 54	64,139	12.9%	64,244	11.6%	64,556	11.7%
55 - 64	53,792	10.8%	61,884	11.2%	57,974	10.5%
65 - 74	29,057	5.8%	48,793	8.8%	49,969	9.1%
75 - 84	15,674	3.2%	24,540	4.4%	30,196	5.5%
85+	8,461	1.7%	10,208	1.8%	11,012	2.0%

Race and Ethnicity	Census 2010		Census 2020		2022		2027	
	Number	Percent	Number	Percent	Number	Percent	Number	Percent
White Alone	348,446	70.1%	316,457	58.0%	318,238	57.5%	308,233	55.9%
Black Alone	38,325	7.7%	44,749	8.2%	45,458	8.2%	44,931	8.2%
American Indian Alone	2,015	0.4%	3,861	0.7%	3,992	0.7%	4,221	0.8%
Asian Alone	58,360	11.7%	75,168	13.8%	77,435	14.0%	80,559	14.6%
Pacific Islander Alone	346	0.1%	291	0.1%	292	0.1%	287	0.1%
Some Other Race Alone	30,817	6.2%	44,878	8.2%	45,897	8.3%	47,451	8.6%
Two or More Races	18,696	3.8%	60,182	11.0%	62,420	11.3%	65,367	11.9%
Hispanic Origin (Any Race)	79,579	16.0%	92,999	17.0%	94,411	17.1%	94,866	17.2%

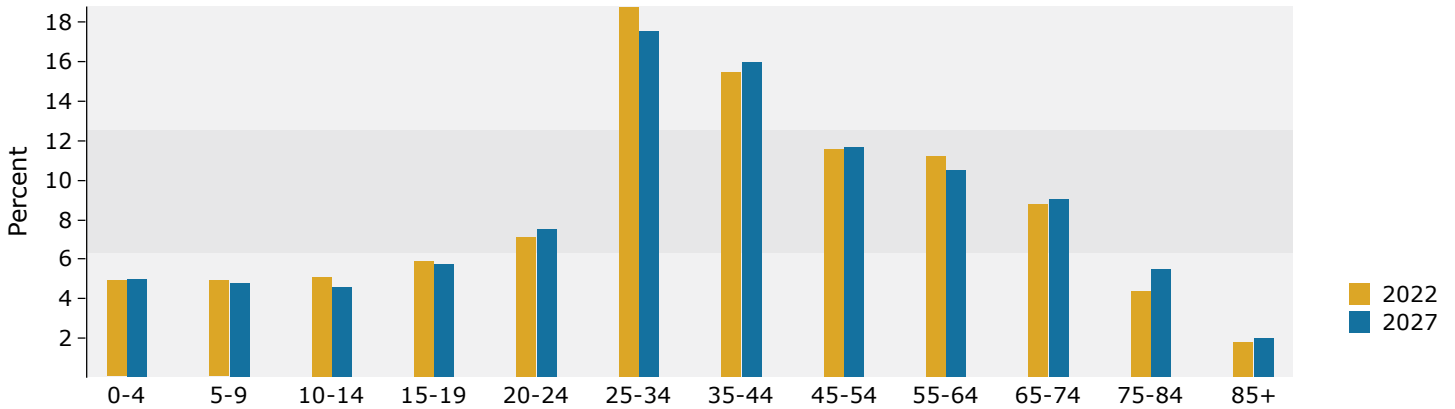
Data Note: Income is expressed in current dollars.

Source: Esri forecasts for 2022 and 2027. U.S. Census Bureau 2010 decennial Census data converted by Esri into 2020 geography.

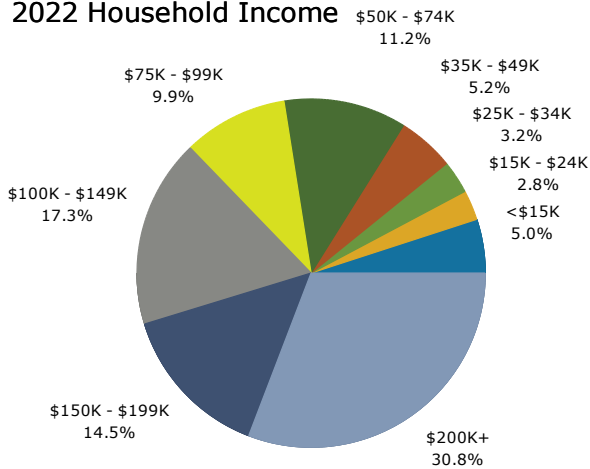
Trends 2022-2027



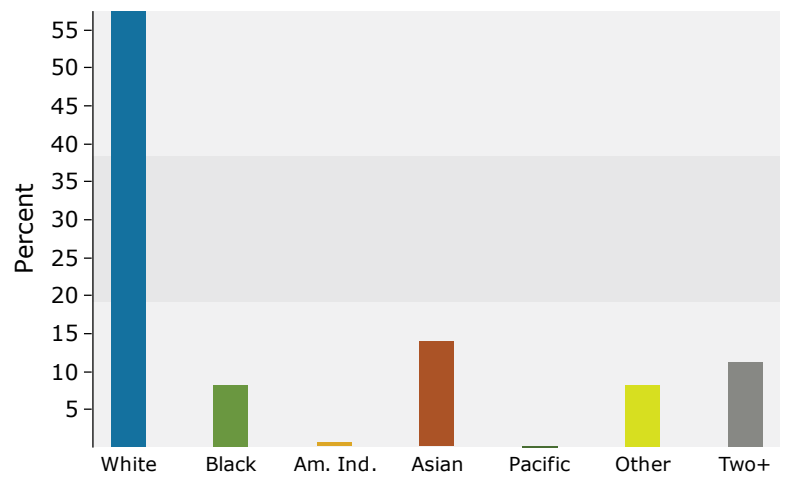
Population by Age



2022 Household Income



2022 Population by Race



2022 Percent Hispanic Origin: 17.1%