

# Demographic and Income Profile

Sugarland Crossing  
47100 Community Plz, Sterling, Virginia, 20164  
Ring: 1 mile radius

Prepared by Esri  
Latitude: 39.01465  
Longitude: -77.37552

Summary	Census 2010	Census 2020	2024	2029
Population	12,587	13,185	13,462	13,924
Households	4,115	4,145	4,254	4,401
Families	3,197	3,264	3,284	3,384
Average Household Size	3.06	3.18	3.16	3.16
Owner Occupied Housing Units	3,318	3,270	3,470	3,615
Renter Occupied Housing Units	797	875	784	786
Median Age	35.4	37.3	37.9	38.8

Trends: 2024-2029 Annual Rate	Area	State	National
Population	0.68%	0.37%	0.38%
Households	0.68%	0.56%	0.64%
Families	0.60%	0.46%	0.56%
Owner HHs	0.82%	0.95%	0.97%
Median Household Income	1.41%	2.80%	2.95%

Households by Income	2024		2029	
	Number	Percent	Number	Percent
<\$15,000	112	2.6%	96	2.2%
\$15,000 - \$24,999	84	2.0%	63	1.4%
\$25,000 - \$34,999	87	2.0%	68	1.5%
\$35,000 - \$49,999	115	2.7%	90	2.0%
\$50,000 - \$74,999	253	5.9%	212	4.8%
\$75,000 - \$99,999	421	9.9%	370	8.4%
\$100,000 - \$149,999	861	20.2%	878	20.0%
\$150,000 - \$199,999	719	16.9%	809	18.4%
\$200,000+	1,602	37.7%	1,816	41.3%

Median Household Income	\$160,511	\$172,119
Average Household Income	\$207,212	\$227,902
Per Capita Income	\$65,081	\$71,659

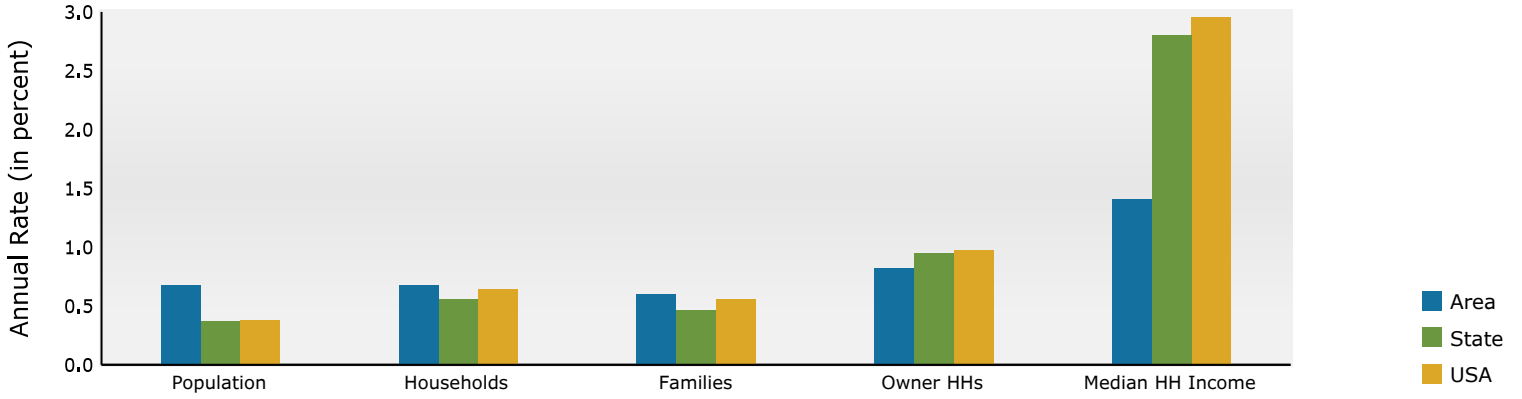
Population by Age	Census 2010		Census 2020		2024		2029	
	Number	Percent	Number	Percent	Number	Percent	Number	Percent
0 - 4	980	7.8%	877	6.7%	869	6.5%	871	6.3%
5 - 9	941	7.5%	862	6.5%	941	7.0%	902	6.5%
10 - 14	875	7.0%	843	6.4%	851	6.3%	975	7.0%
15 - 19	823	6.5%	871	6.6%	753	5.6%	777	5.6%
20 - 24	664	5.3%	799	6.1%	837	6.2%	690	5.0%
25 - 34	1,926	15.3%	1,881	14.3%	1,859	13.8%	1,927	13.8%
35 - 44	2,097	16.7%	1,902	14.4%	2,100	15.6%	2,164	15.5%
45 - 54	2,163	17.2%	1,792	13.6%	1,752	13.0%	1,836	13.2%
55 - 64	1,332	10.6%	1,894	14.4%	1,732	12.9%	1,599	11.5%
65 - 74	523	4.2%	984	7.5%	1,137	8.4%	1,380	9.9%
75 - 84	198	1.6%	375	2.8%	492	3.7%	630	4.5%
85+	66	0.5%	106	0.8%	137	1.0%	174	1.2%

Race and Ethnicity	Census 2010		Census 2020		2024		2029	
	Number	Percent	Number	Percent	Number	Percent	Number	Percent
White Alone	7,312	58.1%	5,697	43.2%	5,457	40.5%	5,289	38.0%
Black Alone	929	7.4%	954	7.2%	979	7.3%	999	7.2%
American Indian Alone	56	0.4%	47	0.4%	48	0.4%	49	0.4%
Asian Alone	2,383	18.9%	2,897	22.0%	3,157	23.5%	3,477	25.0%
Pacific Islander Alone	6	0.0%	5	0.0%	5	0.0%	5	0.0%
Some Other Race Alone	1,348	10.7%	1,817	13.8%	1,943	14.4%	2,101	15.1%
Two or More Races	552	4.4%	1,770	13.4%	1,873	13.9%	2,004	14.4%
Hispanic Origin (Any Race)	2,500	19.9%	3,396	25.8%	3,589	26.7%	3,863	27.7%

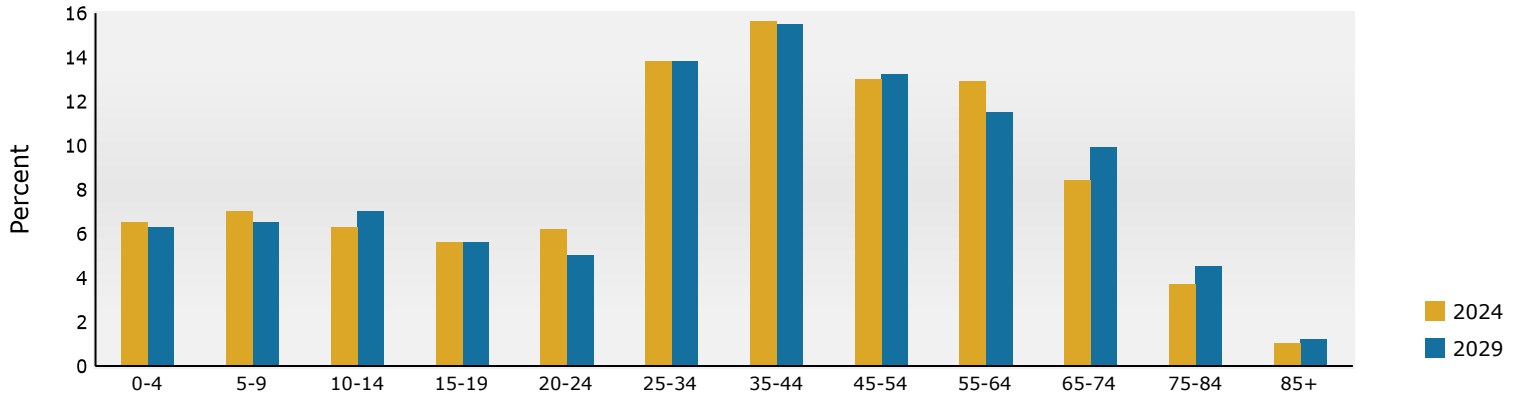
**Data Note:** Income is expressed in current dollars.

**Source:** Esri forecasts for 2024 and 2029. U.S. Census Bureau 2020 decennial Census in 2020 geographies.

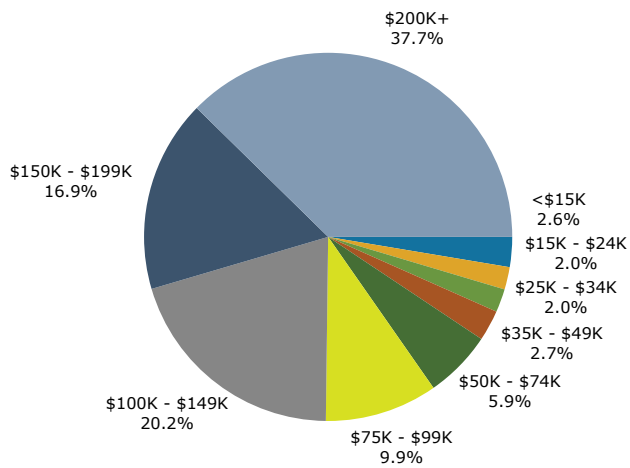
## Trends 2024-2029



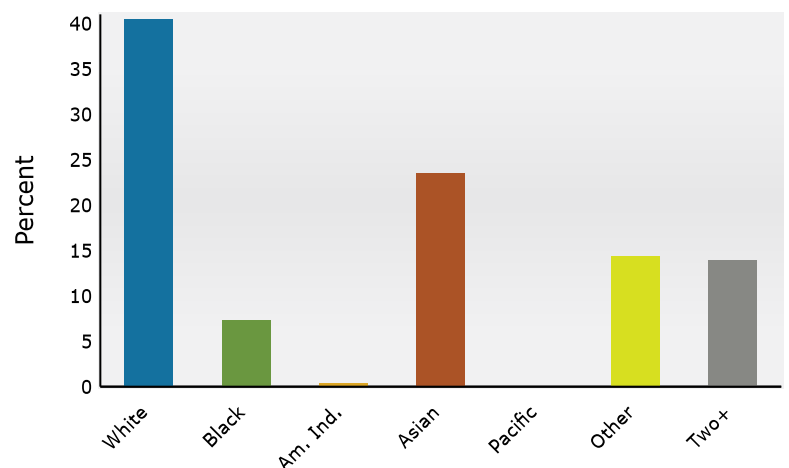
## Population by Age



## 2024 Household Income



## 2024 Population by Race



2024 Percent Hispanic Origin: 26.7%

Source: Esri forecasts for 2024 and 2029. U.S. Census Bureau 2020 decennial Census in 2020 geographies.

# Demographic and Income Profile

Sugarland Crossing  
47100 Community Plz, Sterling, Virginia, 20164  
Ring: 3 mile radius

Prepared by Esri  
Latitude: 39.01465  
Longitude: -77.37552

Summary	Census 2010	Census 2020	2024	2029
Population	98,846	104,694	106,640	110,353
Households	33,308	34,576	35,352	36,633
Families	25,092	26,215	26,256	27,091
Average Household Size	2.97	3.02	3.01	3.01
Owner Occupied Housing Units	25,982	25,780	27,198	28,248
Renter Occupied Housing Units	7,326	8,796	8,154	8,385
Median Age	35.8	37.9	38.7	39.6

Trends: 2024-2029 Annual Rate	Area	State	National
Population	0.69%	0.37%	0.38%
Households	0.71%	0.56%	0.64%
Families	0.63%	0.46%	0.56%
Owner HHs	0.76%	0.95%	0.97%
Median Household Income	1.36%	2.80%	2.95%

Households by Income	2024		2029	
	Number	Percent	Number	Percent
<\$15,000	903	2.6%	752	2.1%
\$15,000 - \$24,999	702	2.0%	527	1.4%
\$25,000 - \$34,999	910	2.6%	737	2.0%
\$35,000 - \$49,999	1,307	3.7%	1,080	2.9%
\$50,000 - \$74,999	2,283	6.5%	1,913	5.2%
\$75,000 - \$99,999	3,382	9.6%	2,986	8.2%
\$100,000 - \$149,999	6,825	19.3%	6,942	19.0%
\$150,000 - \$199,999	6,304	17.8%	7,199	19.7%
\$200,000+	12,737	36.0%	14,499	39.6%

Median Household Income	\$158,196	\$169,270
Average Household Income	\$205,921	\$227,133
Per Capita Income	\$68,401	\$75,577

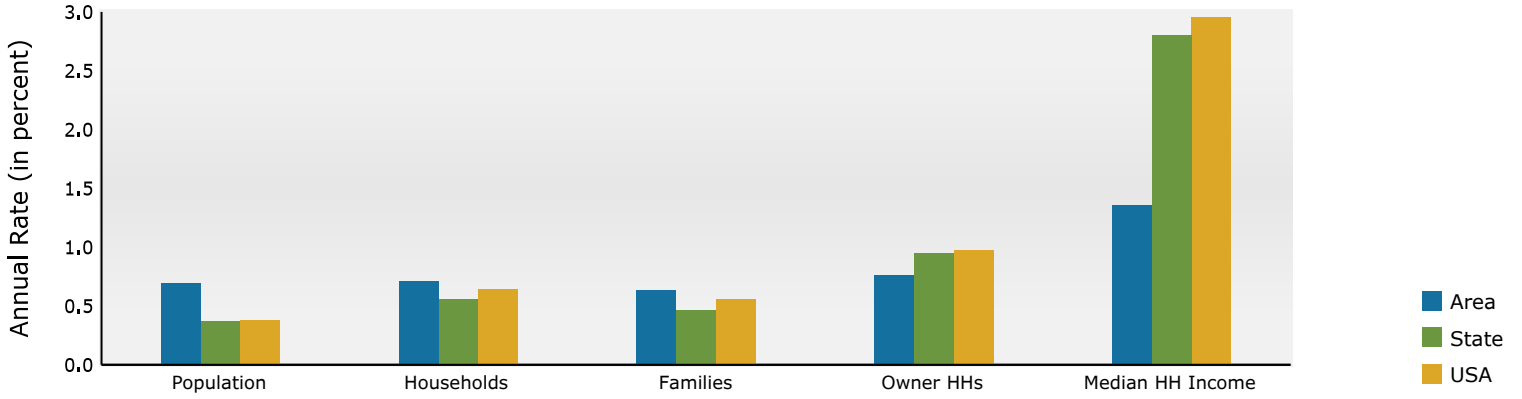
Population by Age	Census 2010		Census 2020		2024		2029	
	Number	Percent	Number	Percent	Number	Percent	Number	Percent
0 - 4	7,781	7.9%	6,437	6.1%	6,363	6.0%	6,368	5.8%
5 - 9	7,471	7.6%	6,583	6.3%	6,978	6.5%	6,629	6.0%
10 - 14	6,999	7.1%	7,263	6.9%	6,902	6.5%	7,572	6.9%
15 - 19	6,273	6.3%	7,272	6.9%	6,549	6.1%	6,425	5.8%
20 - 24	4,972	5.0%	6,476	6.2%	6,567	6.2%	5,927	5.4%
25 - 34	14,702	14.9%	13,858	13.2%	13,995	13.1%	14,662	13.3%
35 - 44	16,474	16.7%	15,274	14.6%	16,573	15.5%	16,607	15.0%
45 - 54	16,605	16.8%	15,047	14.4%	14,893	14.0%	15,617	14.2%
55 - 64	10,737	10.9%	14,308	13.7%	13,778	12.9%	13,445	12.2%
65 - 74	4,251	4.3%	7,837	7.5%	8,782	8.2%	10,430	9.5%
75 - 84	1,757	1.8%	3,243	3.1%	3,991	3.7%	5,104	4.6%
85+	823	0.8%	1,096	1.0%	1,268	1.2%	1,568	1.4%

Race and Ethnicity	Census 2010		Census 2020		2024		2029	
	Number	Percent	Number	Percent	Number	Percent	Number	Percent
White Alone	63,945	64.7%	52,476	50.1%	50,863	47.7%	49,864	45.2%
Black Alone	6,792	6.9%	6,999	6.7%	7,217	6.8%	7,457	6.8%
American Indian Alone	353	0.4%	682	0.7%	678	0.6%	710	0.6%
Asian Alone	14,229	14.4%	16,408	15.7%	17,958	16.8%	19,963	18.1%
Pacific Islander Alone	72	0.1%	65	0.1%	71	0.1%	75	0.1%
Some Other Race Alone	9,073	9.2%	14,602	13.9%	15,494	14.5%	16,764	15.2%
Two or More Races	4,382	4.4%	13,462	12.9%	14,359	13.5%	15,521	14.1%
Hispanic Origin (Any Race)	19,223	19.4%	26,666	25.5%	28,058	26.3%	30,309	27.5%

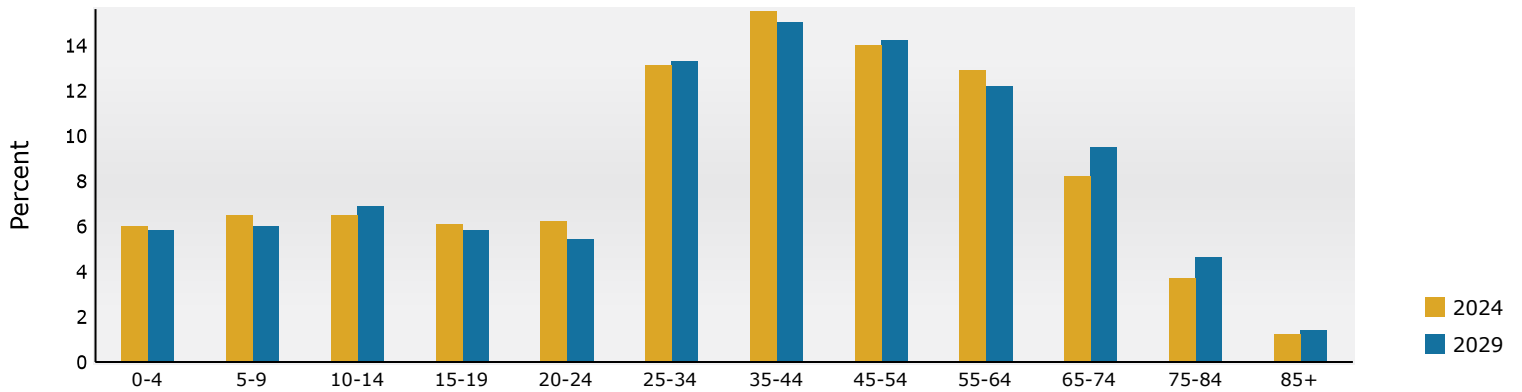
**Data Note:** Income is expressed in current dollars.

**Source:** Esri forecasts for 2024 and 2029. U.S. Census Bureau 2020 decennial Census in 2020 geographies.

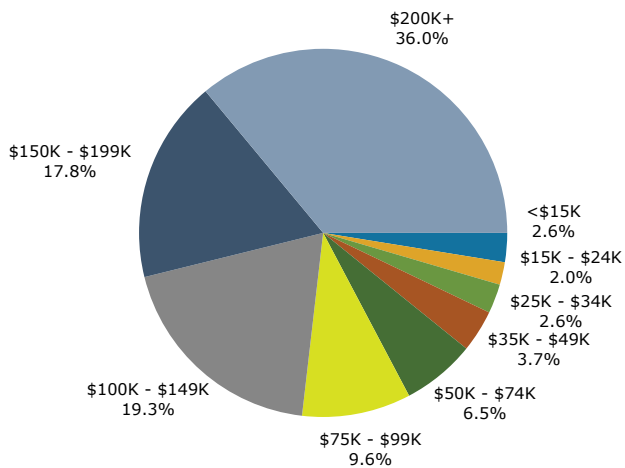
## Trends 2024-2029



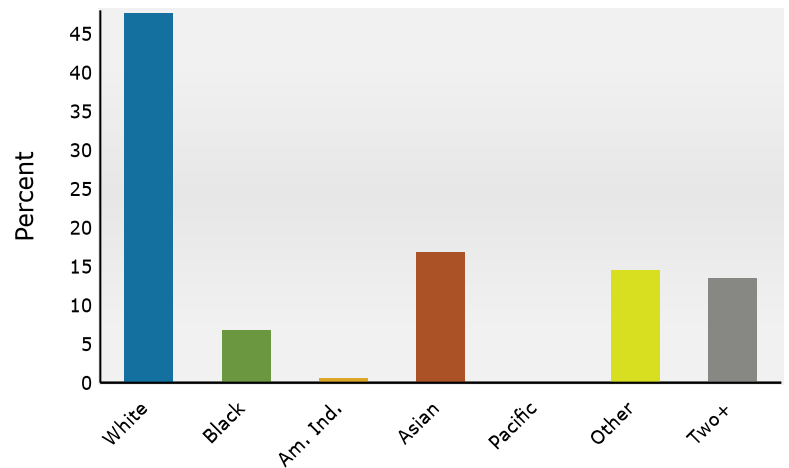
## Population by Age



## 2024 Household Income



## 2024 Population by Race



2024 Percent Hispanic Origin: 26.3%

Source: Esri forecasts for 2024 and 2029. U.S. Census Bureau 2020 decennial Census in 2020 geographies.

# Demographic and Income Profile

Sugarland Crossing  
47100 Community Plz, Sterling, Virginia, 20164  
Ring: 5 mile radius

Prepared by Esri  
Latitude: 39.01465  
Longitude: -77.37552

Summary	Census 2010	Census 2020	2024	2029
Population	182,490	201,319	209,623	220,426
Households	66,168	73,413	77,129	81,550
Families	45,740	50,027	50,927	53,358
Average Household Size	2.75	2.73	2.71	2.70
Owner Occupied Housing Units	44,680	44,768	48,099	50,391
Renter Occupied Housing Units	21,489	28,645	29,030	31,159
Median Age	35.1	37.2	37.9	39.1

Trends: 2024-2029 Annual Rate	Area	State	National
Population	1.01%	0.37%	0.38%
Households	1.12%	0.56%	0.64%
Families	0.94%	0.46%	0.56%
Owner HHs	0.94%	0.95%	0.97%
Median Household Income	1.57%	2.80%	2.95%

Households by Income	2024		2029	
	Number	Percent	Number	Percent
<\$15,000	2,812	3.6%	2,508	3.1%
\$15,000 - \$24,999	1,719	2.2%	1,314	1.6%
\$25,000 - \$34,999	1,935	2.5%	1,553	1.9%
\$35,000 - \$49,999	3,210	4.2%	2,635	3.2%
\$50,000 - \$74,999	5,696	7.4%	5,045	6.2%
\$75,000 - \$99,999	8,242	10.7%	7,579	9.3%
\$100,000 - \$149,999	15,337	19.9%	16,336	20.0%
\$150,000 - \$199,999	12,357	16.0%	14,438	17.7%
\$200,000+	25,816	33.5%	30,138	37.0%

Median Household Income	\$148,185	\$160,161
Average Household Income	\$196,809	\$217,844
Per Capita Income	\$72,362	\$80,521

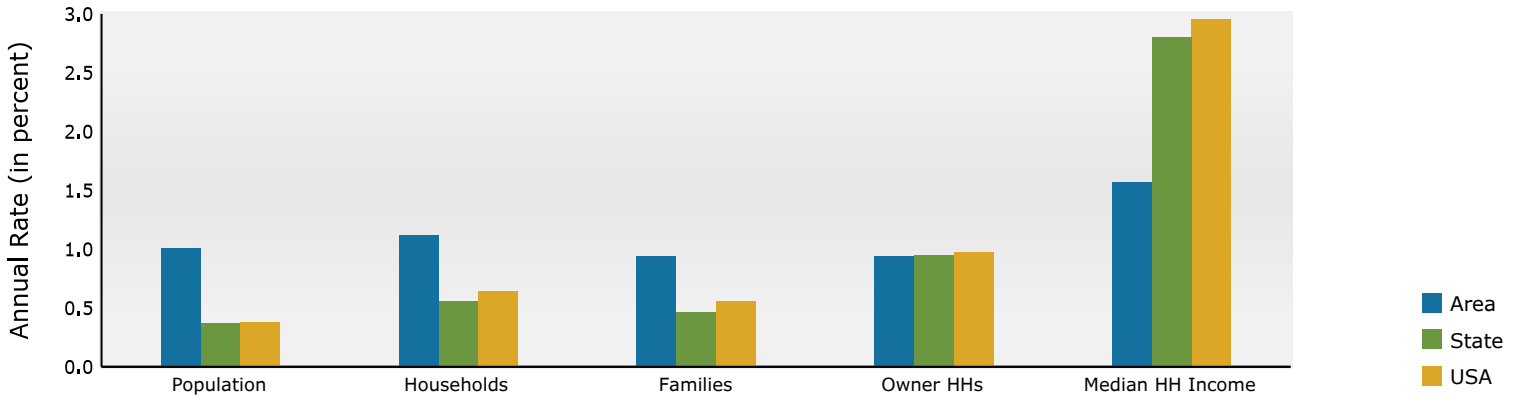
Population by Age	Census 2010		Census 2020		2024		2029	
	Number	Percent	Number	Percent	Number	Percent	Number	Percent
0 - 4	14,392	7.9%	12,376	6.1%	12,455	5.9%	12,535	5.7%
5 - 9	12,856	7.0%	12,398	6.2%	13,148	6.3%	12,761	5.8%
10 - 14	11,845	6.5%	12,863	6.4%	12,471	5.9%	13,919	6.3%
15 - 19	10,391	5.7%	12,363	6.1%	11,532	5.5%	11,864	5.4%
20 - 24	9,597	5.3%	12,409	6.2%	12,765	6.1%	12,051	5.5%
25 - 34	31,772	17.4%	31,306	15.6%	33,006	15.7%	31,955	14.5%
35 - 44	30,322	16.6%	29,658	14.7%	32,797	15.6%	34,994	15.9%
45 - 54	28,318	15.5%	27,378	13.6%	27,740	13.2%	29,715	13.5%
55 - 64	19,245	10.5%	25,278	12.6%	24,525	11.7%	24,960	11.3%
65 - 74	8,367	4.6%	15,061	7.5%	16,665	8.0%	19,701	8.9%
75 - 84	3,738	2.0%	7,413	3.7%	9,241	4.4%	11,844	5.4%
85+	1,648	0.9%	2,813	1.4%	3,275	1.6%	4,127	1.9%

Race and Ethnicity	Census 2010		Census 2020		2024		2029	
	Number	Percent	Number	Percent	Number	Percent	Number	Percent
White Alone	114,196	62.6%	99,678	49.5%	99,012	47.2%	99,203	45.0%
Black Alone	14,909	8.2%	16,582	8.2%	17,882	8.5%	18,887	8.6%
American Indian Alone	661	0.4%	1,193	0.6%	1,216	0.6%	1,295	0.6%
Asian Alone	28,991	15.9%	35,242	17.5%	39,009	18.6%	43,480	19.7%
Pacific Islander Alone	115	0.1%	112	0.1%	118	0.1%	130	0.1%
Some Other Race Alone	15,600	8.5%	24,417	12.1%	26,225	12.5%	28,723	13.0%
Two or More Races	8,019	4.4%	24,096	12.0%	26,161	12.5%	28,709	13.0%
Hispanic Origin (Any Race)	34,383	18.8%	45,251	22.5%	48,286	23.0%	52,915	24.0%

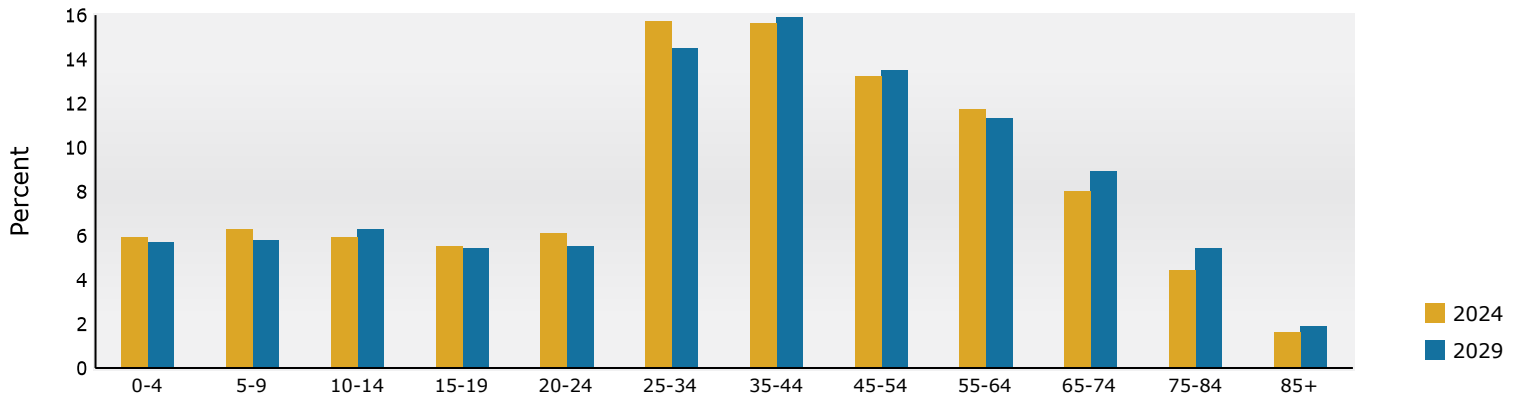
**Data Note:** Income is expressed in current dollars.

**Source:** Esri forecasts for 2024 and 2029. U.S. Census Bureau 2020 decennial Census in 2020 geographies.

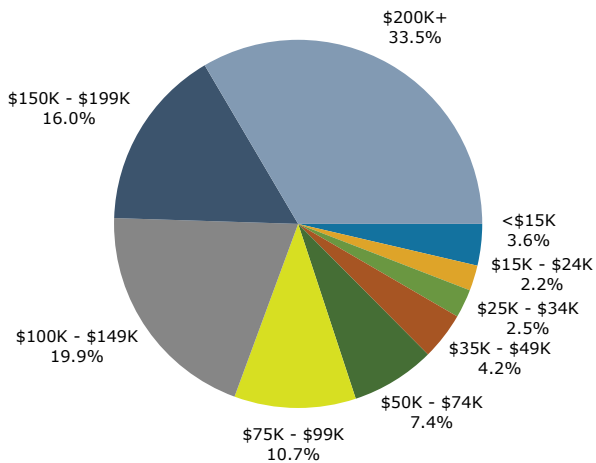
## Trends 2024-2029



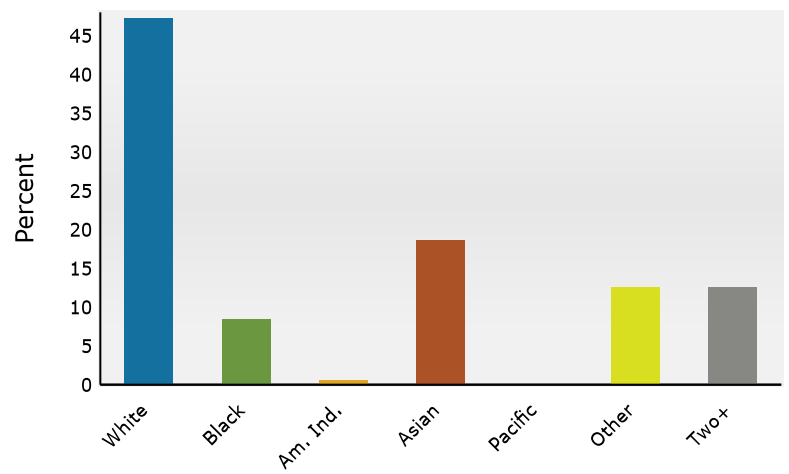
## Population by Age



## 2024 Household Income



## 2024 Population by Race



2024 Percent Hispanic Origin: 23.0%

Source: Esri forecasts for 2024 and 2029. U.S. Census Bureau 2020 decennial Census in 2020 geographies.